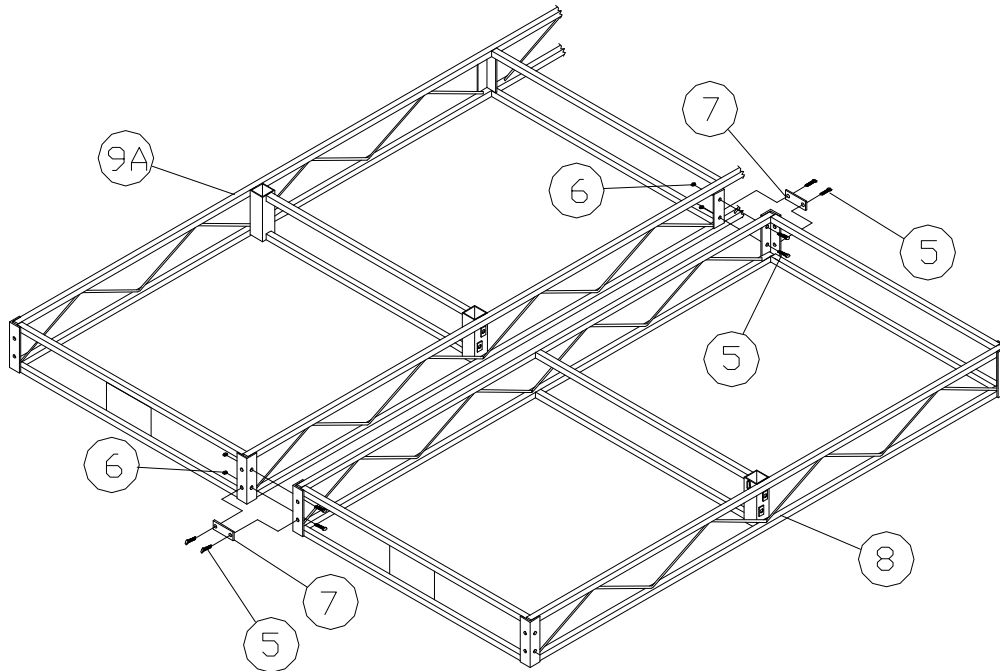


PORTA-DOCK, INC. **S45-L8-SC & G45-L8-GC STEEL PORTA-DOCK**

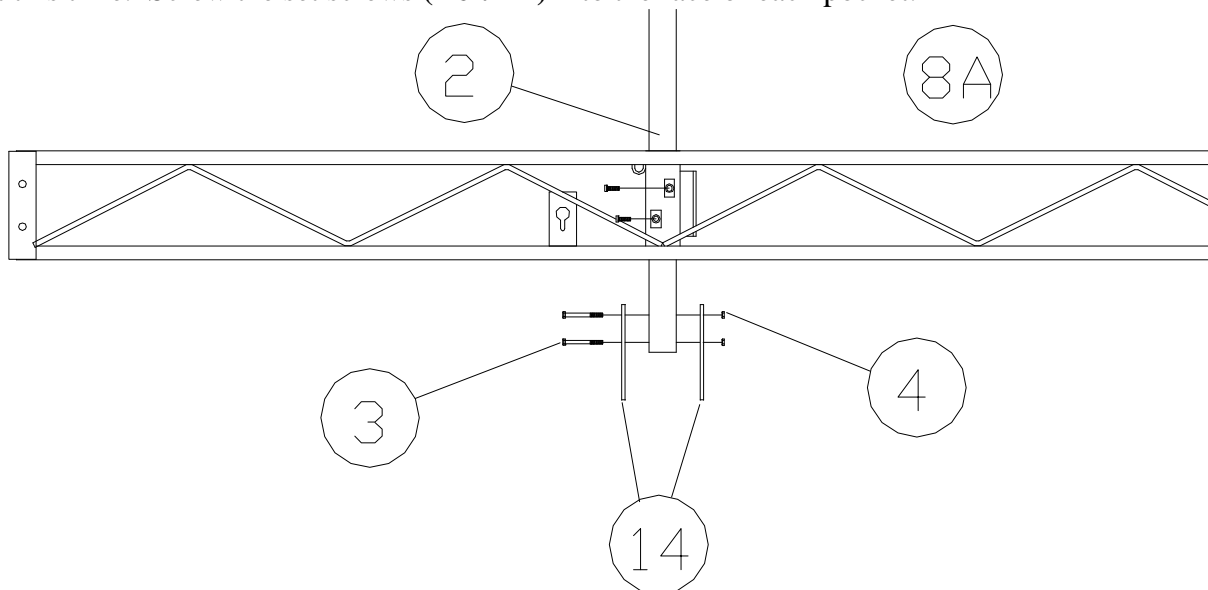
Thank you for purchasing our product!

Please read these instructions and follow them step by step.

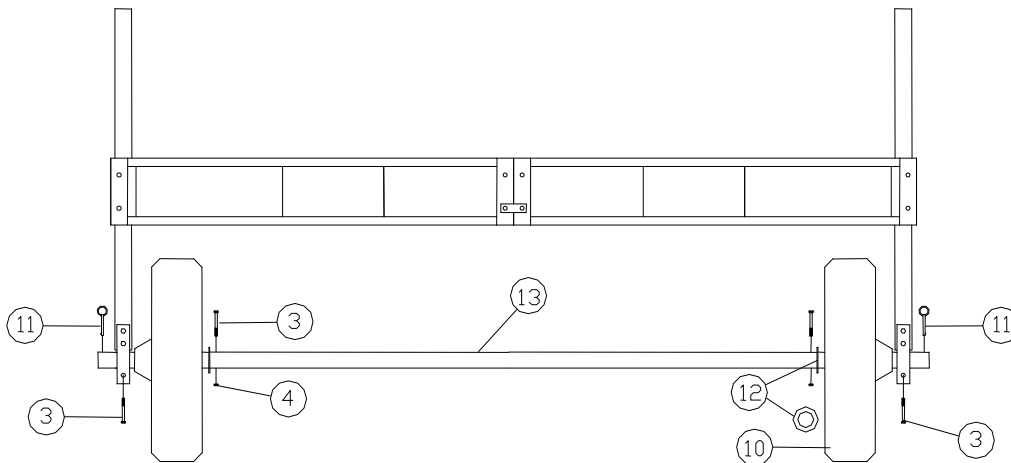
Step 1. Bolt 8' section (**Ref. # 8**) to the desired side of the 16' wheel end section (**Ref. # 9A**) using 1/2" X 1" bolts and nuts (**Ref. # 5 & 6**). Bolt dock connector brackets (**Ref. # 7**) to the lower side holes of the angle with 1/2" X 1" bolts and nuts. Block dock up about 2' high 2' behind the center of the 16' and 8' section.



Step 2. Drop vertical lift member, with holes down (**Ref. # 2**) into the two outside pockets (one in 8' section, one in 16' section). Bolt the two lift member brackets (**Ref. # 14**) to each side of each vertical lift member, using 3/8" X 3" bolts and nuts (**Ref. # 3 & 4**). Leave the nuts loose at this time. Screw the set screws (**Ref. # 1**) into the face of each pocket.



Step 3. Install 3/8" x 3" bolts and nuts (**Ref. # 3 & 4**) into the holes that are further in each end of the axle. Slide on the 3" spacing washer (**Ref. # 12**) and then the tire (**Ref. # 10**) so that the protruding hub is toward the outside of the axle. Place a 1/4" x 2 1/2" pin (**Ref. # 11**) into each end hole of the axle. Roll axle under dock, keeping axle centered with dock. Lower vertical lift members onto top of axle. Fasten in place with third 3/8" X 3" bolt (**Ref. # 3**) through lift member brackets. Tighten all three bolts on each one.



Step 4. Your dock is now ready to move into the water and be adjusted to the desirable height. Place cedar sections on top of framework to complete your cedar Porta-Dock.

NOTE: Always loosen set screws and lower dock before moving to prevent undue strain on vertical lift members.

S45 -L8-SC 4'X 16'AND G45 -L8-GC 4'X 16'STEEL PORTA-DOCK.

REF. #	PART #	DESCRIPTION	SC	GC
1	5170	1/2" X 3/4" SET SCREW	4	4
2	10002	VERTICAL LIFT MEMBER	2	2
3	5084	3/8" X 3" BOLT	8	8
4	5056	3/8" NUT	8	8
5	5123	1/2" X 1" BOLT	8	8
6	5058	1/2" NUT	8	8
7	10000	4' DOCK CONNECTOR BRACKET	2	2
10	4002	TIRE PLASTIC MOLDED	2	2
11	5245	1/4" X 2 1/2" PIN	2	2
12	5077	WASHER 3" O.D. X 2 1/32" I.D.	2	2
13	30091	AXLE 96" SR/GR	1	1
14	10003	LIFT MEMBER BRACKET	4	4
17	3802	1 1/2" VLM CAP	2	2
<u>FRAMES</u>				
9A	T01	STEEL PAINTED 16' WHEEL END	1	-
9A	H01	GALVANIZED 16'WHEEL END	-	1
8	T04	STEEL PAINTED 8' L-SECTION	1	-
8	H04	GALVANIZED 8' L-SECTION	-	1
<u>PANELS</u>				
	B52	4' X 8' CEDAR L8 CUT OUT	2	2
	B53	4' X 4' CEDAR. PANEL STRAIGHT	2	2



Wheel dock height adjustment instructions

Before moving your dock into the water, make sure that the chains are not wrapped around the axle, and then pull the slack out of the chains by hooking them into the keyhole bracket. Roll your dock into position, and loosen the set screws on the VLM pocket. Adjust the dock to the desired height making sure that there is enough slack in the chains to accommodate the height you will be adjusting to. Once the desired height is reached, pull both the chains tight and then lower one side of the dock so the next link can be hooked into the keyhole slot and raise the dock back up to complete the tightening of the chain. Repeat on the other side. When finished with this, there should be no visible slack left in the chains, and they should be tight enough that you can't move them. Tighten the set screws in the VLM pocket.

The cross chains are to help control the side-to-side stability of the end of the dock and need to be tight. Once set they only need to be adjusted if the height of the dock is changed.

WARNING: before raising the dock it is necessary to loosen both of the chains and the set screws, or serious damage to the dock may occur. When tightening the set screws, they should be tightened until they are snug against inside leg, and then tightened 1 1/2 to 2 turns more. Check the set screws after a couple of uses and retighten if necessary.

When moving dock into and from lake, lower dock to lowest level possible.