

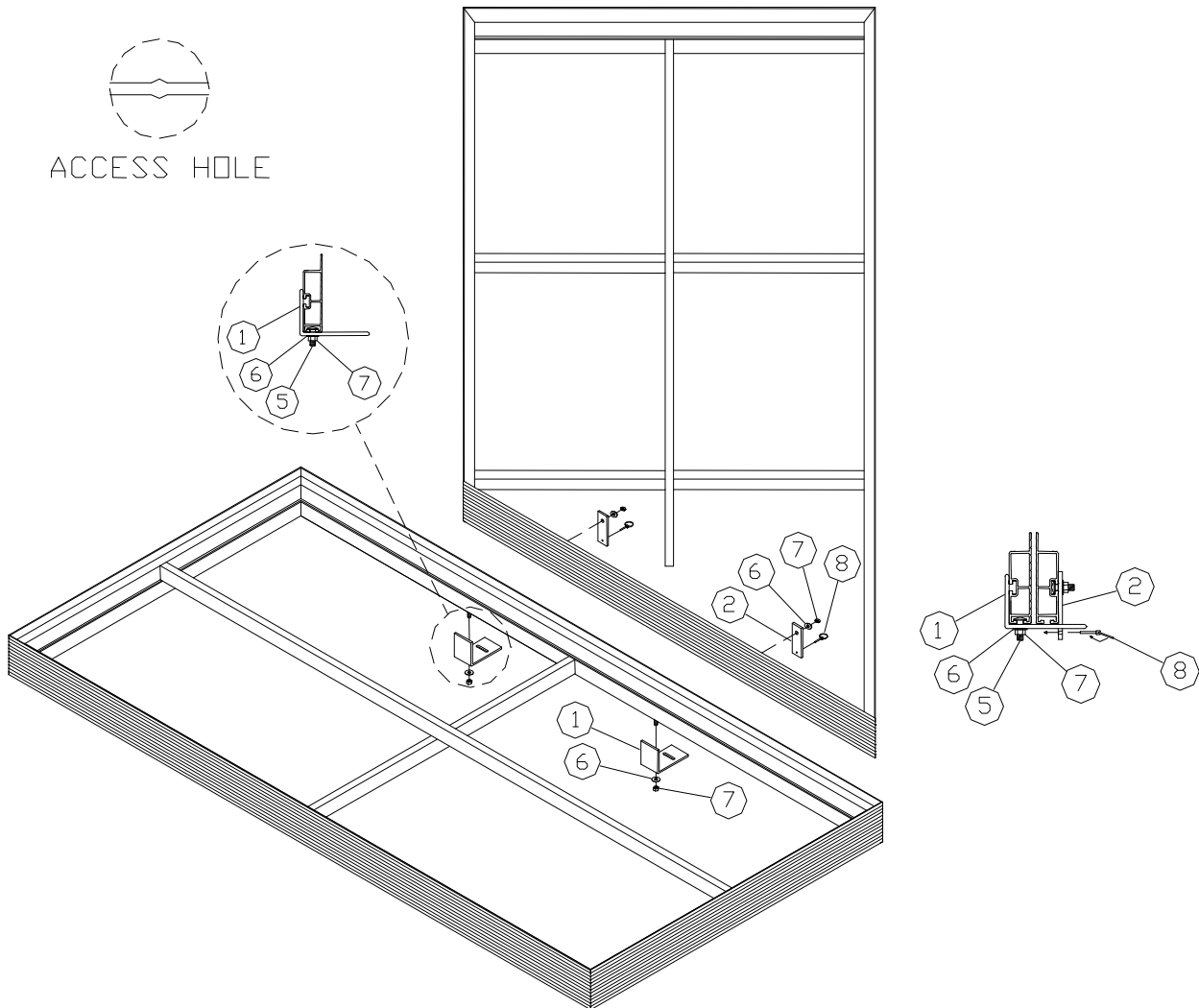
PORTA-DOCK, INC.
APM32 MULTI-DOCK 4' X 12' ALUMINUM DECKING LEFT 45°
APM30 MULTI-DOCK 4' X 12' ALUMINUM DECKING RIGHT 45°
AWM32 MULTI-DOCK 4' X 12' CEDAR DECKING LEFT 45°
AWM30 MULTI-DOCK 4' X 12' CEDAR DECKING RIGHT 45°

For Beige Decking Add the Letter B to the Model

Thank you for purchasing our product!

***Please read these instructions and follow them step by step.**

Step 1. Bolt the pockets and braces to the dock frames. See instructions in pocket box. Bolt the dock-connecting angles to the main walkway dock approximately 56" apart by sliding 3/8" X 1" carriage bolts (REF. NO. 5) into the bottom access holes in the frame where the connection will be and secure the angles with 3/8" washers and nuts (REF. NO. 6 & 7) making sure the connecting angle is held tight against the inside of the frame. Set the angled dock section on these angles then slide a 3/8" X 1" carriage bolt (REF. NO. 5) into each access hole in the frame, slide the dock connecting flat into the slot in the dock connecting angle and secure with a 3/8" washer and nut (REF. NO. 6 & 7). After the flat is in the slot place a pin (REF. NO. 8) through the hole. On APM models, run foam tape on the top edge of framework.



APM32 MULTI-DOCK 4' X 12' ALUMINUM DECKING LEFT 45°
APM30 MULTI-DOCK 4' X 12' ALUMINUM DECKING RIGHT 45°
AWM32 MULTI-DOCK 4' X 12' CEDAR DECKING LEFT 45°
AWM30 MULTI-DOCK 4' X 12' CEDAR DECKING RIGHT 45°

| REF. # | PART NO. | DESCRIPTION | APM | AWM |
|---------------|-----------------|---------------------------|------------|------------|
| 1 | 60153 | DOCK CONNECTING ANGLE | 2 | 2 |
| 2 | 60154 | DOCK CONNECTING FLAT | 2 | 2 |
| 3 | 4108 | TAPE-PVC FOAM 16' ROLL | 3 | - |
| 4 | 3829 | CAP PLUG 1 3/8" WHITE | 2 | - |
| | 3830 | CAP PLUG 1 3/8" BEIGE | 2 | 2 |
| 5 | 5193 | CARRIAGE BOLT 3/8" X 1" | 4 | 4 |
| 6 | 5070 | 3/8" WASHER | 4 | 4 |
| 7 | 5056 | 3/8" NUT | 4 | 4 |
| 8 | 5239 | LYNCH PIN 3/16" X 1 9/16" | 2 | 2 |