

PORTA-DOCK, INC.

MULTI-DOCKS WITH ALUMINUM DECKING

**APM45 4 X 8 2 CUTOUTS ** APM50 4' X 8' 4 CUTOUTS ** APM24 4 X 12 2 CUTOUTS
APM26 4 X 12 4 CUTOUTS ** APM 52 4 X 16 2 CUTOUTS** APM 54 4 X 16 4 CUTOUTS
APM12 5 X 8 2 CUTOUTS ** APM14 5 X 8 4 CUTOUTS **APM16 5 X 12 2 CUTOUTS APM18
5 X 12 4 CUTOUTS**

MULTI-DOCKS WITH CEDAR DECKING

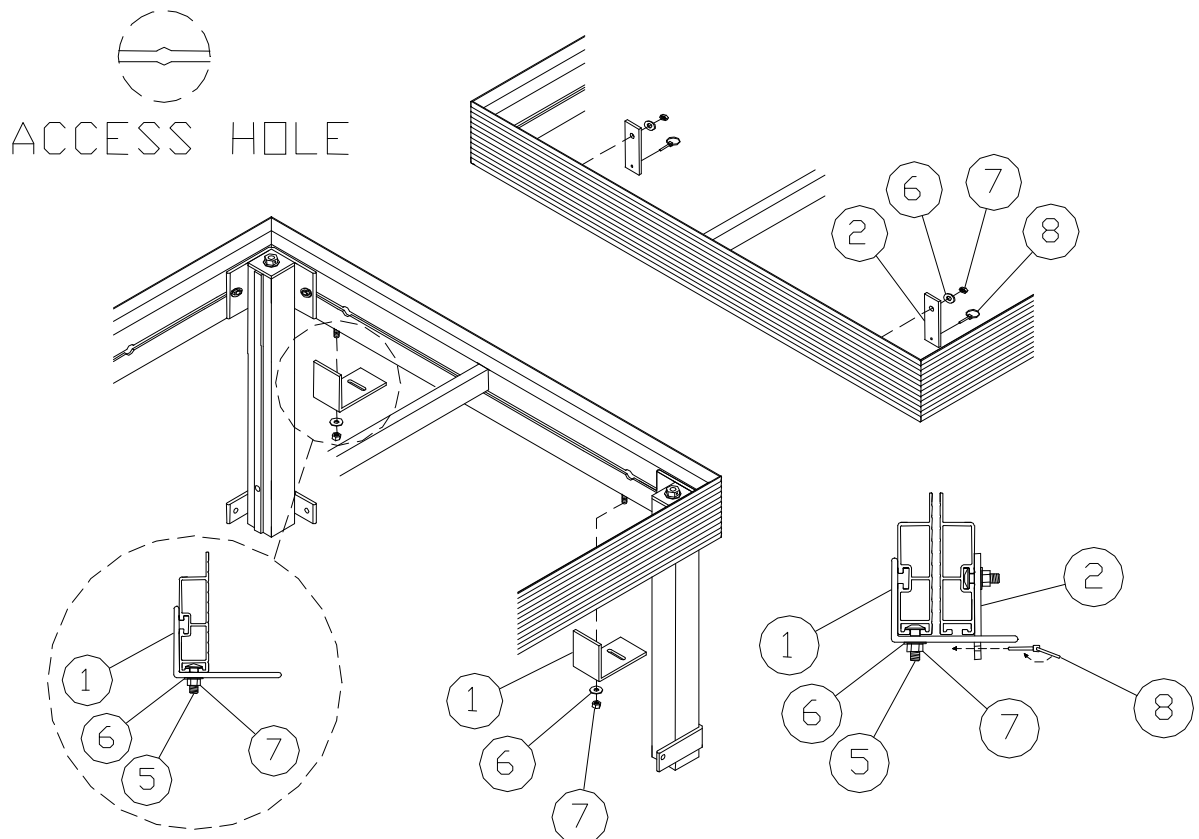
**AWM45 4 X 8 2 CUTOUTS ** AWM50 4 X 8 4 CUTOUTS ** AWM24 4 X 12 2 CUTOUTS
AWM26 4 X 12 4 CUTOUTS ** AWM52 4 X 16 2 CUTOUTS** AWM54 4 X 16 4 CUTOUTS
AWM12 5 X 8 2 CUTOUTS ** AWM14 5 X 8 4 CUTOUTS **AWM16 5 X 12 2 CUTOUTS
AWM18 5 X 12 4 CUTOUTS**

For Beige Decking Add the Letter B to the Model

Thank you for purchasing our product!

***Please read these instructions and follow them step by step.**

Step 1. Bolt the pockets and braces to the dock frames. See instructions in pocket box. Bolt the dock-connecting angle to the dock by sliding a 3/8" X 1" carriage bolt (**REF. NO. 5**) into the bottom access holes in the frame where the connection will be and secure the angle with 3/8" washers and nuts (**REF. NO. 6 & 7**) making sure that the edge of the bracket is against the pocket angle and held tight against the inside of the frame. Set the next dock section on these angles. Making sure the docks are even, slide a 3/8" X 1" carriage bolt (**REF. NO. 5**) into the access hole in the other frame, slide the dock connecting flat into the slot in the dock connecting angle and secure with a 3/8" washer and nut (**REF. NO. 6 & 7**). After the flat is in the slot place a pin (**REF. NO. 8**) through the hole. On APM models, run foam tape on the top edge of framework.



MULTI-DOCKS WITH ALUMINUM DECKING

**APM45 4 X 8 2 CUTOUTS ** APM50 4' X 8' 4 CUTOUTS ** APM24 4 X 12 2 CUTOUTS
APM26 4 X 12 4 CUTOUTS ** APM 52 4 X 16 2 CUTOUTS** APM 54 4 X 16 4
CUTOUTS APM12 5 X 8 2 CUTOUTS ** APM14 5 X 8 4 CUTOUTS **APM16 5 X 12 2
CUTOUTS APM18 5 X 12 4 CUTOUTS**

MULTI-DOCKS WITH CEDAR DECKING

**AWM45 4 X 8 2 CUTOUTS ** AWM50 4 X 8 4 CUTOUTS ** AWM24 4 X 12 2
CUTOUTS
AWM26 4 X 12 4 CUTOUTS ** AWM52 4 X 16 2 CUTOUTS** AWM54 4 X 16 4
CUTOUTS AWM12 5 X 8 2 CUTOUTS ** AWM14 5 X 8 4 CUTOUTS **AWM16 5 X 12
2 CUTOUTS AWM18 5 X 12 4 CUTOUTS**

REF. #	PART NO.	DESCRIPTION	APM	AWM
1	60153	DOCK CONNECTING ANGLE	2	2
2	60154	DOCK CONNECTING FLAT	2	2
3	4108	TAPE-PVC FOAM 16' ROLL	3	-
4	3829	CAP PLUG 1 3/8" WHITE	2(4)	-
	3830	CAP PLUG 1 3/8" BEIGE	2(4)	2(4)
5	5193	CARRIAGE BOLT 3/8" X 1"	4	4
6	5070	3/8" WASHER	4	4
7	5056	3/8" NUT	4	4
8	5239	LYNCH PIN 3/16" X 1 9/16"	2	2

DOCK FRAMES

M82 4' X 8' MULTI-DOCK FRAME
M84 4' X 12' MULTI-DOCK FRAME
M89 4' X 16' MULTI-DOCK FRAME
M87 5' X 8' MULTI-DOCK FRAME
M88 5' X 12' MULTI-DOCK FRAME

PANELS

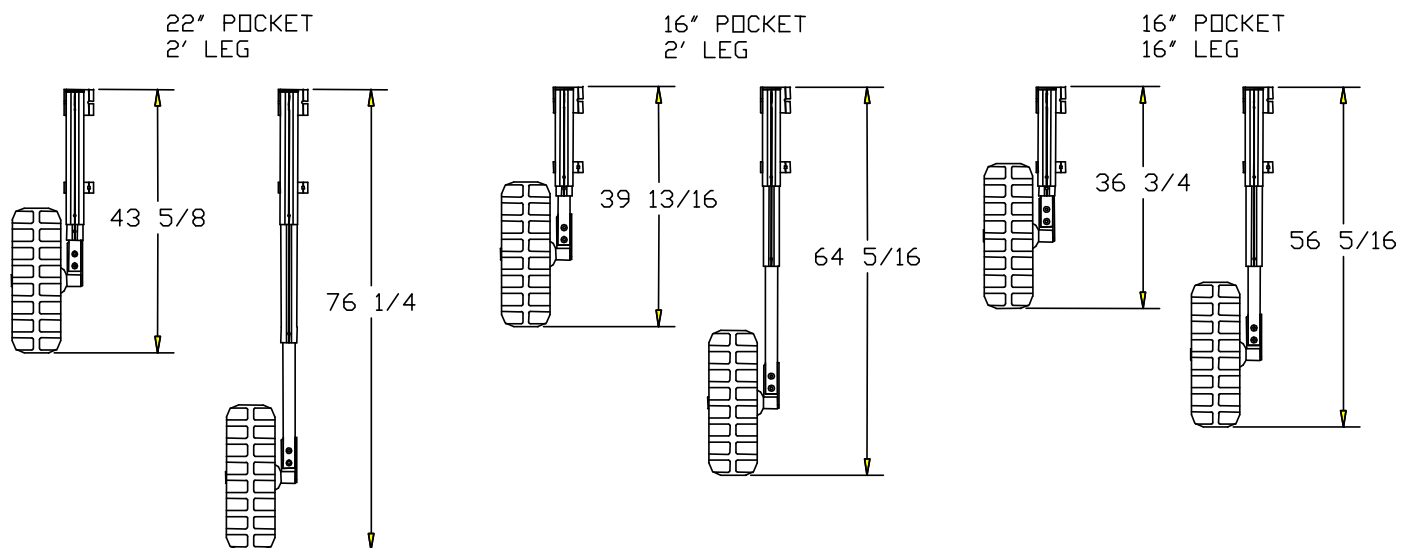
B86 PANEL WHITE 4' X 4' STRAIGHT
B86B PANEL BEIGE 4' X 4' STRAIGHT
BB34 PANEL APM WHITE 4' X 4' DOUBLE HOLE
BB34B PANEL APM BEIGE 4' X 4' DOUBLE HOLE

B13 PANEL WHITE 5' X 4' STRAIGHT
B13B PANEL BEIGE 5' X 4' STRAIGHT
BB36 PANEL APM WHITE 5' X 4' DOUBLE HOLE
BB36B PANEL APM BEIGE 5' X 4' DOUBLE HOLE

B48 PANEL CEDAR 4' X 4' STRAIGHT
BB16 PANEL CEDAR 4' X 4' DOUBLE HOLE
BB1 PANEL CEDAR 5' X 4' STRAIGHT
BB50 PANEL CEDAR 5' X 4' DOUBLE HOLE

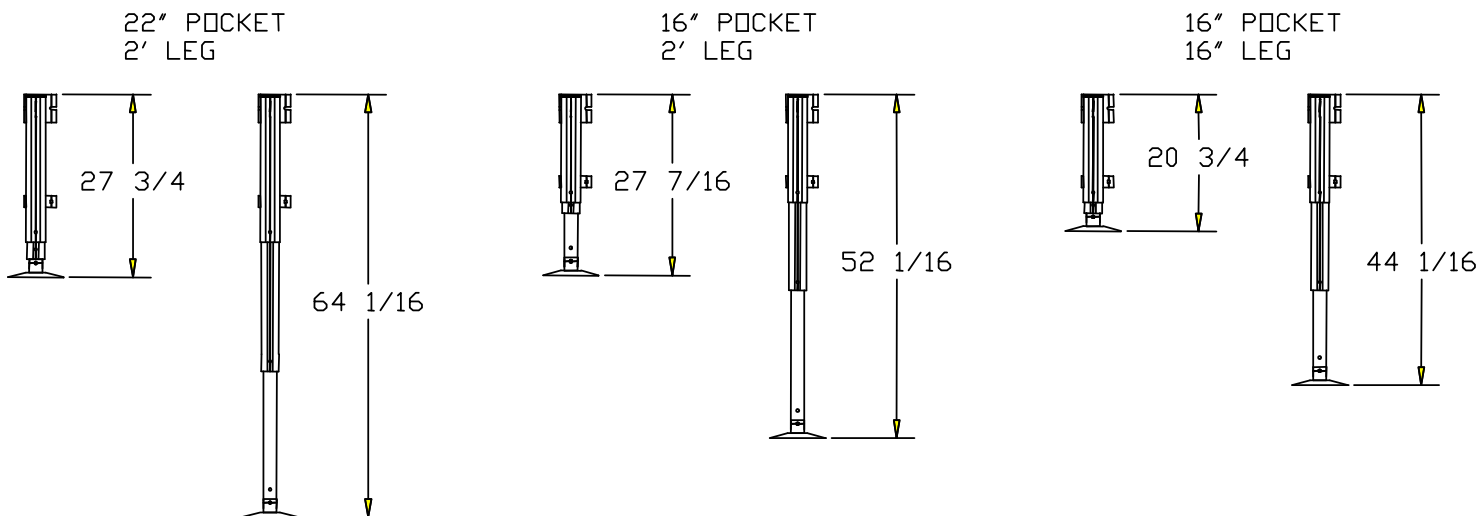
PORTA-DOCK, INC.
MULTI DOCK LEG SPECIFICATIONS

MULTI DOCK POCKET
 AND LEG WITH WHEELS



	LEGS (SINGLE)
	P16 -- 16" LEG
	P24 -- 24" LEG
	P36 -- 36" LEG
	P48 -- 48" LEG
	P60 -- 60" LEG
POCKETS (PAIR)	
C162 -- 16" POCKET	
C164 -- 22" POCKET	

MULTI DOCK POCKET
 AND LEG WITH PADS



Porta-Dock, Inc.