

PORTA-DOCK, INC.

WHEEL DOCK CORNERS

CC6 APD 5' RIGHT CORNER, CC7 5' APD LEFT CORNER
CC4 5' CPD RIGHT CORNER, CC5 5' CPD LEFT CORNER

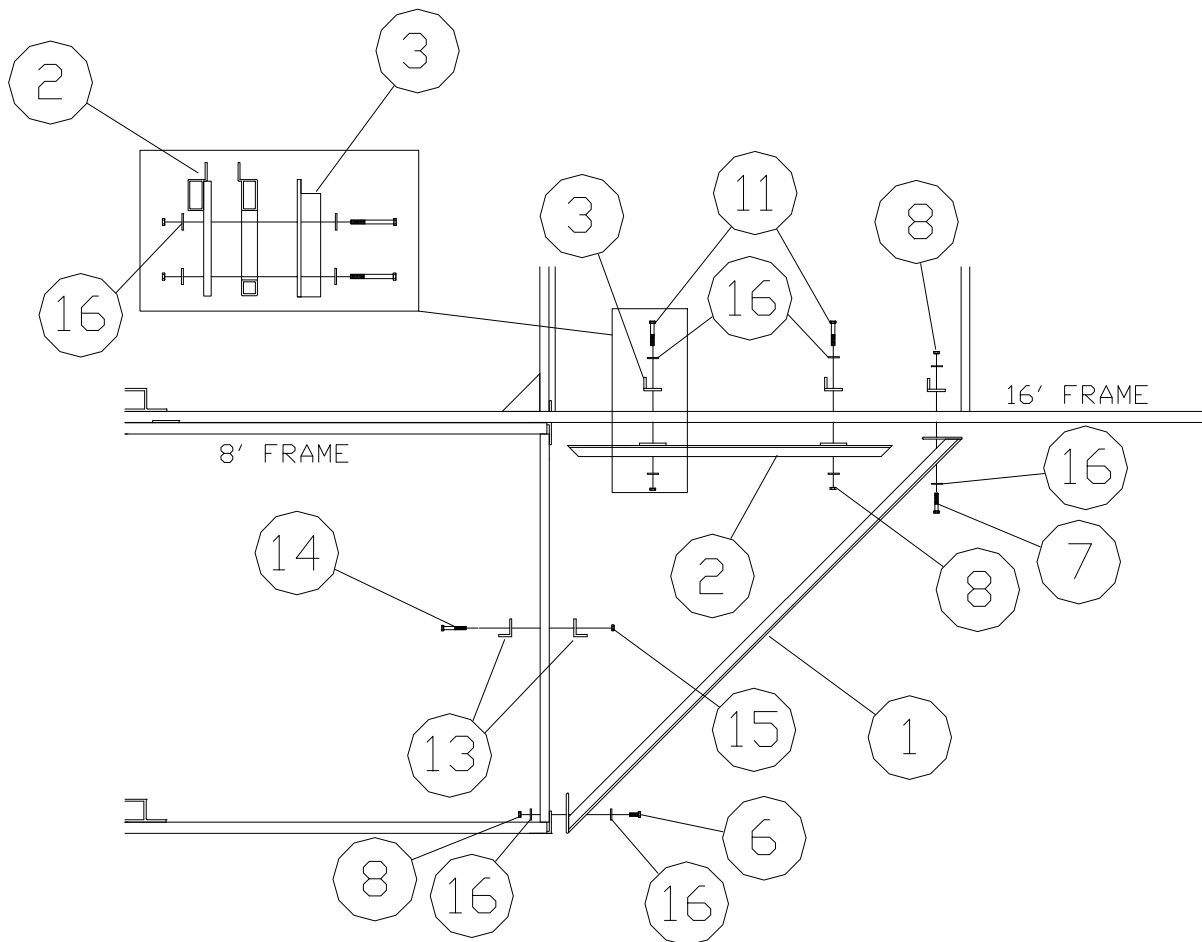
Thank you for purchasing our product.

Please read these instructions and follow them step by step.

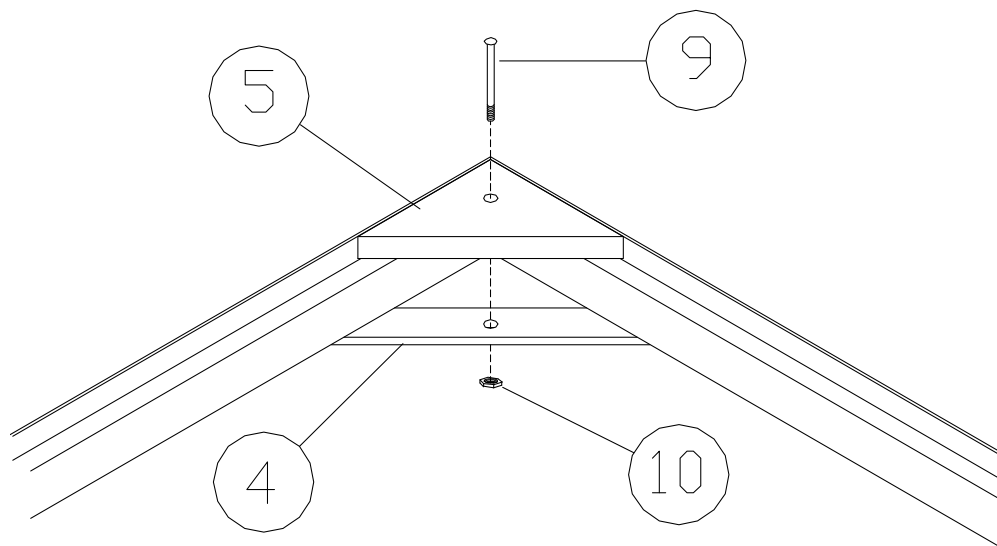
NOTE: APD corners only, run foam tape on topside of frames (REF. # 1 & 2).

STEP 1. Bolt the longer outside corner side frame (REF. # 1) to the end corner angle of the 8' L section using two ½" X 1" bolts, washers, and nuts (REF. # 6, 16, & 8). Clamp the other end to the side of the 16' dock section by placing the backer angle (REF. # 3) with the notch end up on the inside of the 16' dock section. Place the ½" X 2" bolts and washers (REF. # 7 & 16) through the angle and the dock side and into the plate of the corner side frame. Secure with washers, and ½" nuts (REF. # 16 & 8). **NOTE:** Only Hand tighten all nuts at this time.

STEP 2. Clamp the remaining inside corner side frame (REF. # 2) to the side of the 16' section midway between 8' section and the diagonal corner side. Secure with two backer angles (REF. # 3) and ½" X 2 ½" bolts, washers, and nuts (REF. # 11, 16, & 8). Locate the other two remaining angles (REF. # 13) and clamp them to the center end of the 8' section using 3/8" X 2" bolts (REF. # 14) make sure the top of the angle is no higher than the cross tube of the dock section.



STEP 3. Place corner panel into the framework so that the planking is running in the same direction as the panels of the dock. **NOTE:** If necessary, adjust outside corner frame to fit the panel evenly. **TIGHTEN ALL FOUR BOLTS AT THIS TIME.** On CPD models bolt small cedar (**REF. # 5**) to shore end of corner, using 1/4" X 4" carriage bolt and clamping flat (**REF. # 4**).



CC6 APD 5' RIGHT CORNER, CC7 5' APD LEFT CORNER
CC4 5' CPD RIGHT CORNER, CC5 5' CPD LEFT CORNER

REF. #	Part #	Description	Qty
1	E20	OUTSIDE CORNER FRAME	1
2	E21	INSIDE CORNER FRAME	1
3	30803	BACKER ANGLE	3
4	50182	5' CPD COR FLAT BACKER	1
5	50024	CORNER BOARD	1
6	5123	1/2" X 1" BOLT	2
7	5125	1/2" X 2" BOLT	2
8	5058	1/2" NUT	8
9	5182	1/4" X 4" CARRIAGE BOLT	1
10	5055	1/4" NUT	1
11	5120	1/2" X 2 1/2"	4
	CC2	4' X 4' ALUMINUM RIGHT CORNER PANEL	1
	CC3	4' X 4' ALUMINUM LEFT CORNER PANEL	1
	BB9	4' X 4' CEDAR RIGHT CORNER PANEL	1
	CC1	4' X 4' CEDAR LEFT CORNER PANEL	1
12	4108	APD FOAM TAPE	1
13	50126	PANEL SUPPORT ANGLES	2
14	5082	3/8" X 2" BOLT	2
15	5056	3/8" NUT	2
16	5069	7/16" WASHER	16