

PORTA-DOCK, INC.

A82 APD & A90 CPD L10 5' X 16' ALUMINUM PORTA-DOCK

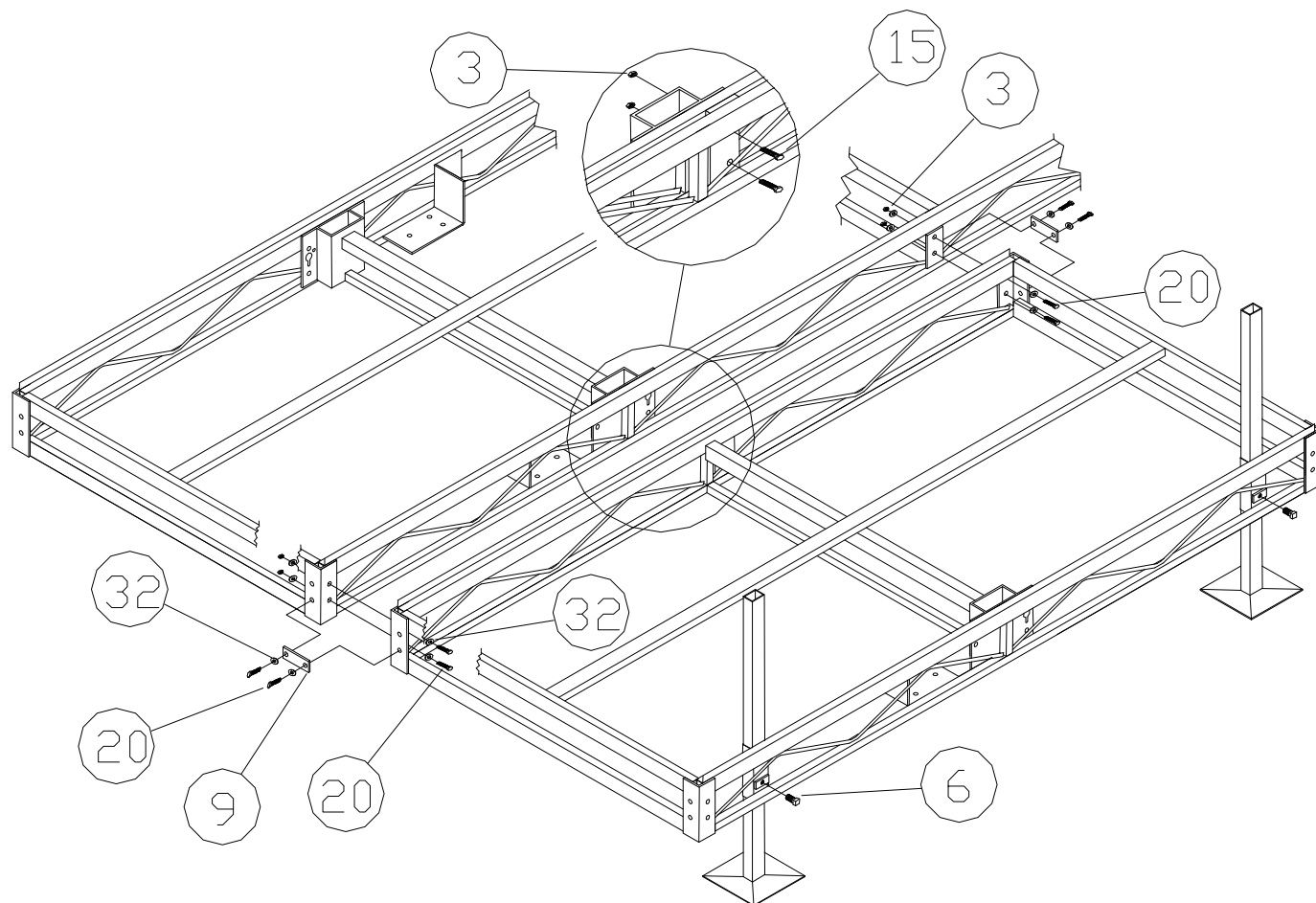
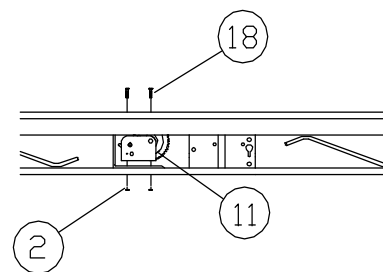
For Beige Decking Add the Letter B to Model

Thank you for purchasing our product!

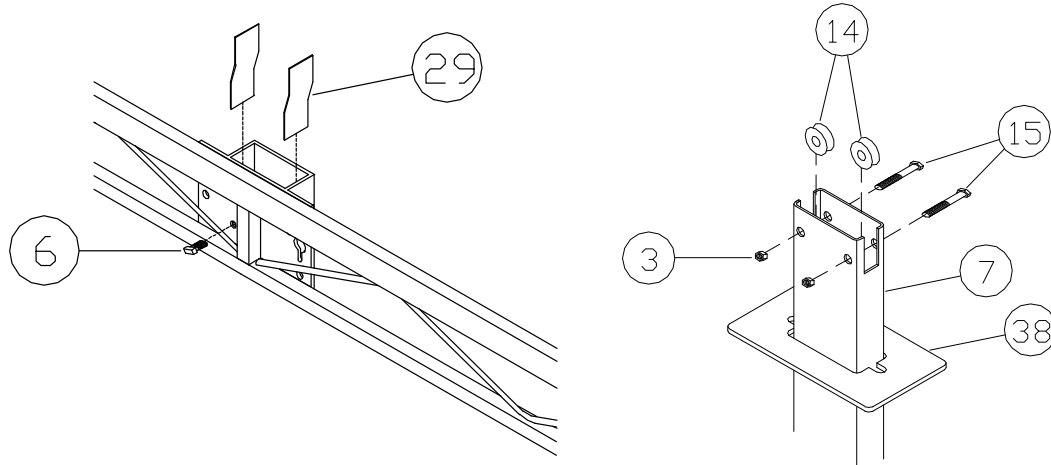
Please read these instructions and follow them step by step.

STEP 1. Take the 5' x 8' section (**REF.#34**) and tip it up on it's side so that the pockets are on top. Slide an 8' support post (**REF.#23**) into each end pocket and hold in place with 1/2" x 3/4" setscrew (**REF.#6**). Decide if you want your L dock to the right or left. Lay the 8' section (**REF.#34**) to that side of the 16' wheel end section. Bolt 8' L section to the side of the 16' wheel end section using 1/2" x 1 1/4" bolts and nuts (**REF.#20 & 3**). Bolt the center of the 8' section to the inside pocket of the 16' section using 1/2" x 2 1/2" bolts and nuts (**REF.#15 & 3**).

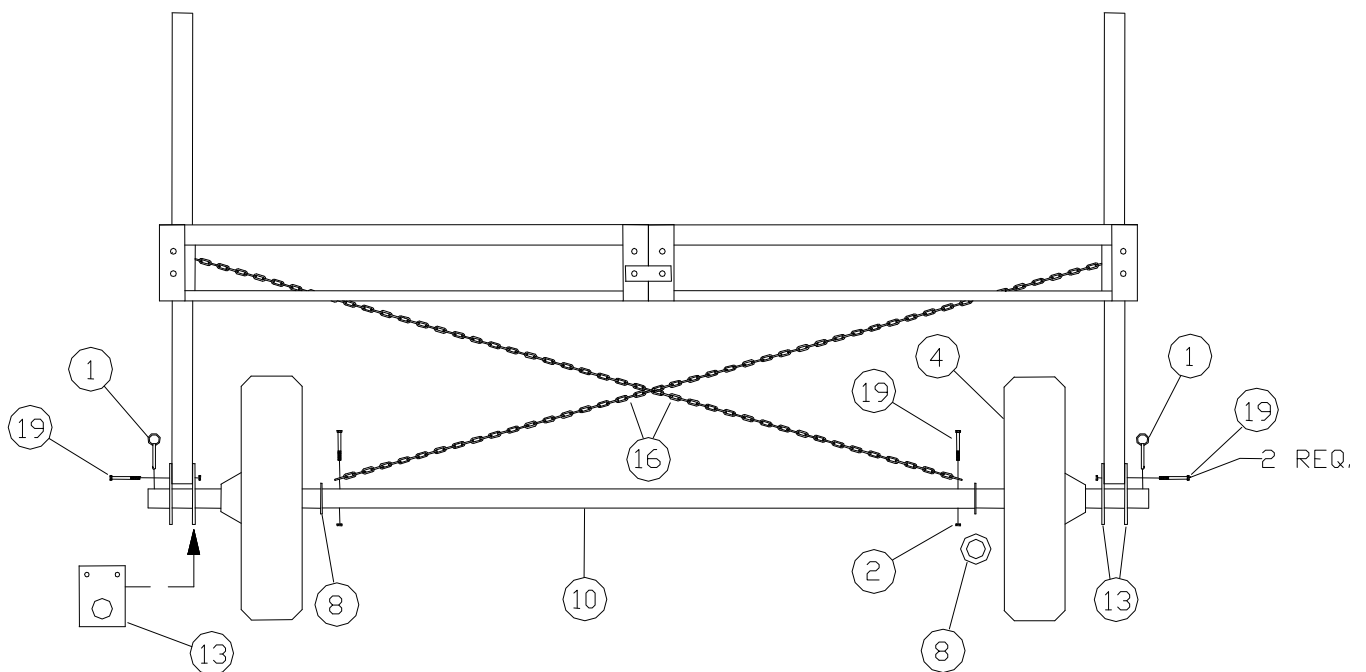
Raise and block dock frame up about 30" (on the 8' L side you can use the support post to hold that side up). Then bolt winch (**REF.#11**) with three 3/8" x 1" bolts and nuts (**REF.#18 & 2**) to the outside winch plate of the 16' section with the winch handle stub to the outside. Bolt winch on in the same manner to the outside of the 8' section.



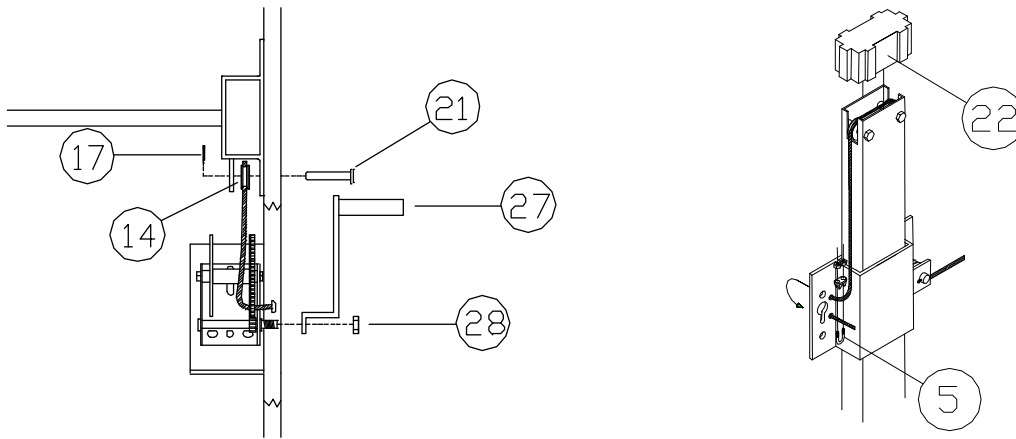
STEP 2. Apply the four nylon wear strips (**REF.#29**) to the inside narrow ends of the pockets. Pockets should be clean and dry and the above 50 degrees. Slide a VLM cover plate (**REF. #38**) onto each vertical lift member. Attach dock pulleys (**REF.#14**) with 1/2" x 2 1/2" bolts and nuts (**REF.#15 & 3**) to top of vertical lift members (**REF.#7**). Insert vertical lift members into pockets on each side of dock. Secure with set screw (**REF.#6**) into the face of the pockets. Leave all setscrews loose at this time



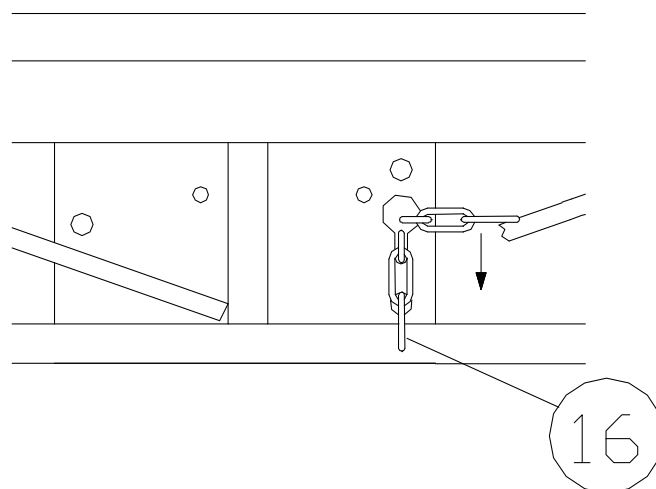
STEP 3. Attach chain (**REF.#16**) to inside holes of axle (**REF.#10**) with 3/8" x 3" bolts and nuts (**REF.#19 & 2**). Slide on 3" washers (**REF.#8**). Slide the wheels (**REF.#4**) with the protruding hub to the outside on the axle, up to the 3" washers, then the lift member brackets (**REF.#13**). Place the 1/4" x 2 1/2" pin (**REF.#1**) in the holes in the ends of the axle. Roll axle under dock, keeping axle centered with dock. Bolt lift member bracket (**REF.#13**) to vertical lift member (**Ref. #7**) with 3/8" x 3" bolts and nuts (**REF.#19 & 2**).



STEP 4. Attach winch handles (**REF.#27**) with winch nut (**REF.#28**). Attach lower dock pulleys (**REF.#14**) between pocket and ear tab located on the winch side of the vertical lift member pocket with $\frac{1}{2}$ " x $2\frac{3}{4}$ " clevis and cotter pins (**REF.#21 & 17**). Starting winch cable (**REF.#12**) from the outside of the winch, pass cable through the holes on the side of the drum with the gears. Run the cable through lower pulley, then up to pulleys on vertical lift members, and down to the top $1\frac{3}{32}$ " hole in the pocket and back through the bottom $1\frac{3}{32}$ " hole. Fasten with cable clamp (**REF.#5**). Work winches until cables are raising dock. You must alternate winches as dock moves up or down and you must have slack in the chain when raising the dock. Place VLM pulley cover (**REF.#22**) on to the vertical lift members and caps (**REF.#24**) on the 8' support posts.



STEP 5. Raise dock high enough to be able to work under it. Bring ends of chain (**REF.#16**) up to the opposite side of dock, through the keyhole bracket located on the vertical lift member pocket and lock in position by sliding the chain link down the keyhole slot.



NOTE: After the panels are installed in the dock, slide a cover plate (**REF.#31**) over each dock post and onto the deck. Place a rectangular post cap (**REF.#24**) onto each post.

Before moving your dock into the water, make sure that the chains are not wrapped around the axle, and then pull the slack out of the chains by hooking them into the keyhole bracket. Roll your dock into position, and loosen the set screws on the VLM pocket. Adjust the dock to the desired height making sure that there is enough slack in the chains to accommodate the height you will be adjusting to. Once the desired height is reached, pull both the chains tight and then lower one side of the dock so the next link can be hooked into the keyhole slot and raise the dock back up to complete the tightening of the chain. Repeat on the other side. When finished with this, there should be no visible slack left in the chains, and they should be tight enough that you can't move them. Tighten the set screws in the VLM pocket.

The cross chains are to help control the side-to-side stability of the end of the dock and need to be tight. Once set they only need to be adjusted if the height of the dock is changed.

WARNING: before raising the dock it is necessary to loosen both of the chains and the set screws, or serious damage to the dock may occur. When tightening the set screws, they should be tightened until they are snug against inside leg, and then tightened 1 1/2 to 2 turns more. Check the set screws after a couple of uses and retighten if necessary.

When moving dock into and from lake, lower dock to lowest level possible.

A82 L10 APD & A90 L10 CPD ALUMINUM PORTA-DOCK

| REF.# | PART# | DESCRIPTION | APD | CPD |
|--------------|--------------|---|------------|------------|
| 1 | 5245 | 1/4" X 2 1/2" PIN | 2 | 2 |
| 2 | 5056 | 3/8" NUT | 12 | 12 |
| 3 | 5058 | 1/2" NUT | 14 | 14 |
| 4 | 4002 | TIRE PLASTIC MOLDED | 2 | 2 |
| 5 | 5003 | 3/16" CABLE CLAMP | 2 | 2 |
| 6 | 5170 | 1/2" X 3/4" SET SCREW | 4 | 4 |
| 7 | 30084 | VERTICAL LIFT MEMBER | 2 | 2 |
| 8 | 5077 | 3" WASHER | 2 | 2 |
| 9 | 10200 | 5' CONNECTOR BRACKET | 2 | 2 |
| 10 | 30181 | AXLE FOR L10 5' DOCK | 1 | 1 |
| 11 | 3005 | DL 1100 WINCH | 2 | 2 |
| 12 | 3050 | 3/16" X 15' CABLE | 2 | 2 |
| 13 | 30088 | LIFT MEMBER BRACKET | 4 | 4 |
| 14 | 3300 | 1 1/2" PULLEY SHEAVE | 6 | 6 |
| 15 | 5120 | 1/2" X 2 1/2" BOLT | 6 | 6 |
| 16 | 3089 | 3/16" X 11' 6" CHAIN | 2 | 2 |
| 17 | 5025 | 1/8" X 1" COTTER PIN | 2 | 2 |
| 18 | 5081 | 3/8" X 1" BOLT | 6 | 6 |
| 19 | 5084 | 3/8" X 3" BOLT | 6 | 6 |
| 20 | 5126 | 1/2" X 1 1/4" BOLT | 8 | 8 |
| 21 | 5008 | 1/2" X 2 3/4" CLEVIS PIN | 2 | 2 |
| 22 | 3804 | VLM PULLEY COVER | 2 | 2 |
| 23 | C30 | 8' ALUMINUM DOCK POST | 2 | 2 |
| 24 | 3803 | RECTANGULAR POST CAP | 2 | 2 |
| 27 | 3008 | DL WINCH HANDLE | 2 | 2 |
| 28 | 5066 | DL WINCH NUT | 2 | 2 |
| 29 | 4112 | 8 1/2" VLM WEAR PAD | 4 | 4 |
| 30 | 4108 | APD FOAM TAPE 16' ROLL | 5 | - |
| 31 | 3840 | COVER PLATE APD WHITE | 2 | - |
| | 3845 | COVER PLATE APD BEIGE | 2 | - |
| | 3841 | COVER PLATE CPD | - | 2 |
| 32 | 5069 | 7/16" WASHERS | 16 | 16 |
| 33 | F94 | 5' X 16' WHEEL END FRAME | 1 | 1 |
| 34 | F97 | 5' X 8' L10 FRAME | 1 | 1 |
| | B68 | 5' X 4' CEDAR L10 WH END LEFT CUTOUT - | 1 | |
| | B69 | 5' X 4' CEDAR L10 WH END RIGHT CUTOUT | - | 1 |
| | B31 | 5' X 4' CEDAR L10 L SECTION LEFT CUTOUT | - | 1 |
| | B44 | 5' X 4' CEDAR L10 L SECT. RIGHT CUTOUT | - | 1 |
| | B10 | 5' X 4' CEDAR STRAIGHT | - | 1 |
| | B73 (B) | 5' X 4' ALUM. L10 WH END LEFT CUTOUT | 1 | - |
| | B81 (B) | 5' X 4' ALUM. L10 WH END RIGHT CUTOUT | 1 | - |
| | B67 (B) | 5' X 4' ALUM. L10 SECTION LEFT CUTOUT 1 | - | - |
| | B66 (B) | 5' X 4' ALUM. L10 SECTION RIGHT CUTOUT | 1 | - |
| | B13 (B) | 5' X 4' ALUM. STRAIGHT | 1 | - |
| 38 | 3850 | VLM COVER PLATE APD WHITE | 2 | - |
| | 3851 | VLM COVER PLATE APD BEIGE | 2 | - |
| | 3852 | VLM COVER PLATE CPD BROWN | - | 2 |



Wheel dock height adjustment instructions

Before moving your dock into the water, make sure that the chains are not wrapped around the axle, and then pull the slack out of the chains by hooking them into the keyhole bracket. Roll your dock into position, and loosen the set screws on the VLM pocket. Adjust the dock to the desired height making sure that there is enough slack in the chains to accommodate the height you will be adjusting to. Once the desired height is reached, pull both the chains tight and then lower one side of the dock so the next link can be hooked into the keyhole slot and raise the dock back up to complete the tightening of the chain. Repeat on the other side. When finished with this, there should be no visible slack left in the chains, and they should be tight enough that you can't move them. Tighten the set screws in the VLM pocket.

The cross chains are to help control the side-to-side stability of the end of the dock and need to be tight. Once set they only need to be adjusted if the height of the dock is changed.

WARNING: before raising the dock it is necessary to loosen both of the chains and the set screws, or serious damage to the dock may occur. When tightening the set screws, they should be tightened until they are snug against inside leg, and then tightened 1 1/2 to 2 turns more. Check the set screws after a couple of uses and retighten if necessary.

When moving dock into and from lake, lower dock to lowest level possible.