

115A - 20113 APL
127A - 30113 APL
234A - 40113 APL
130A - 30113 FPB

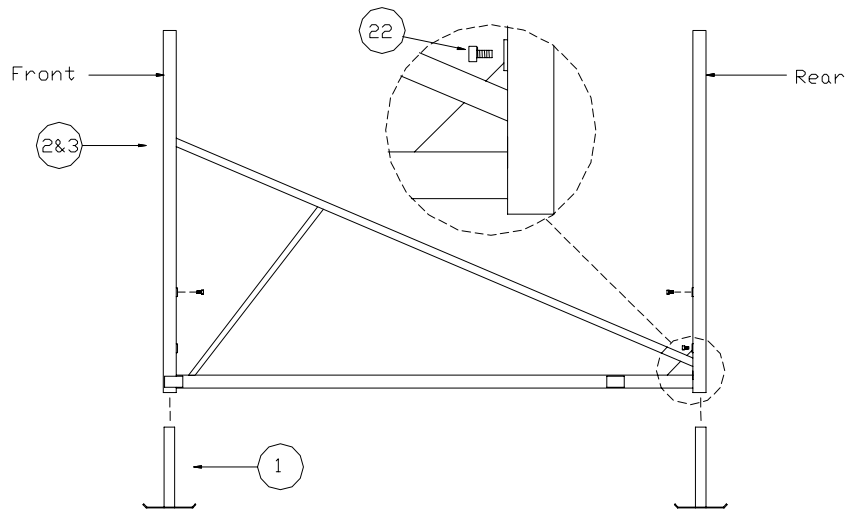
116A - 20113 DPL
128A - 30113 DPL
235A - 40113 DPL
267A - 40113 FPB

ALUMINUM CANTILEVER PONTOON LIFTS

Thank you for purchasing our product! Please read these instructions and follow them step by step.*

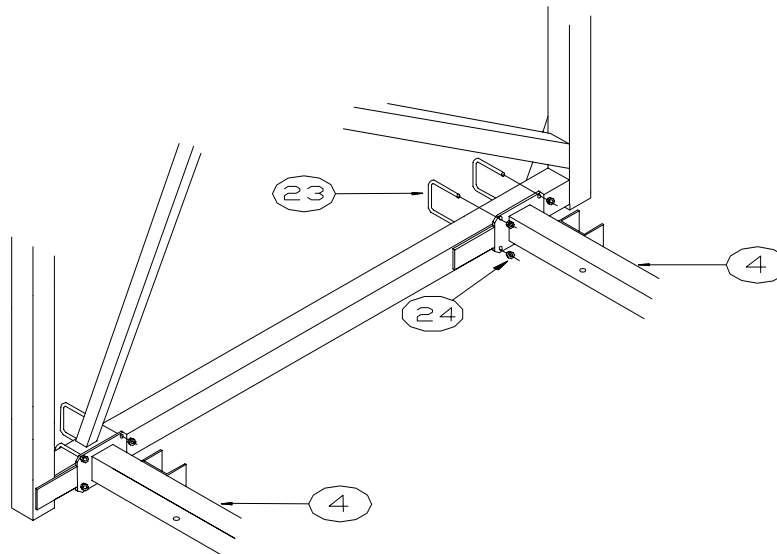
STEP 1.

Separate and group like parts and fasteners together . Locate the four leveling legs with pads (**REF. NO. 1**) and the two side members (**REF. NO. 2 & 3**) slide the four leveling legs into the end upright tubes of the side members. Secure in place with 1/2" x 1" set screws (**REF. NO. 22**) On the 4000lb. models, use two set screws per leg. Set the side members approximately the same distance apart as what your lift width is (2095/3095 is 95" and 20113/30113/40113 is 113"). Make sure the rear gusset plate is to the outside and the small flat tabs on the bottom side tube are to the inside.



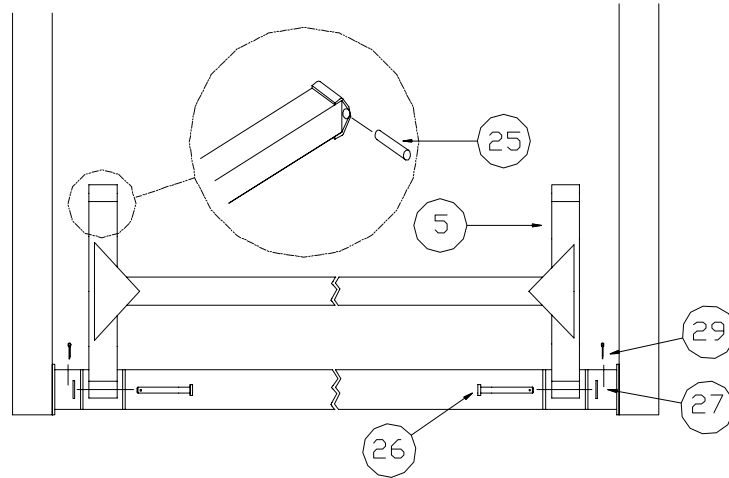
STEP 2.

Find the two bottom cross bar tubes (**REF. NO. 4**) (They're the ones with the end plates and channels welded on.) With the channel facing to the rear of the lift set them between the two side members so that the end plate is up against the end of the tabs that are welded on the bottom side tube. Fasten to bottom tube with the eight square U bolts and flange nuts. (**REF. NO. 23 & 24**) Finger tighten nuts. Using a tape measure, square the four corners of the uprights so that it is within about a 1/4". Tighten all U bolt nuts.



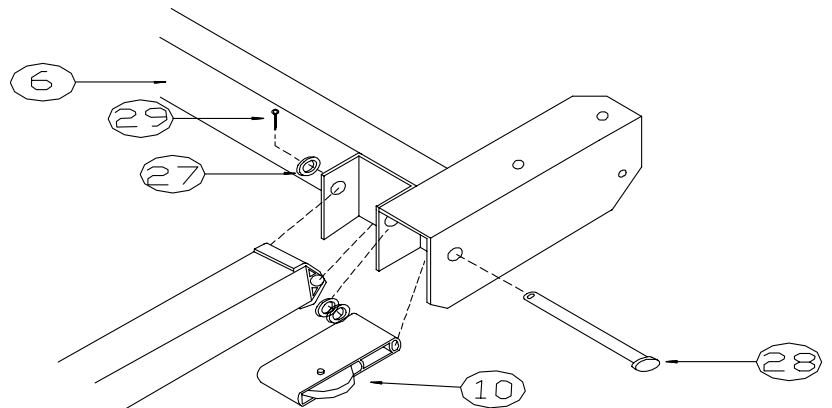
STEP 3.

Locate the two H shape lifting arms (**REF. NO. 5**). Slide a brass pivot bushing (**REF. NO. 25**) into each pivot cap on the ends of the lifting arms. Place the lifting arm into the channels of the bottom cross tubes and fasten into place using 5/8" x 4 1/2" clevis pin and 5/8" washers. (**REF. NO. 26 & 27**) on 3000lb.-4000lb. models and 1/2" x 3" clevis pins and 1/2" washers on 1200lb.-2000lb. models. Secure with pins. (**REF. NO. 29**).



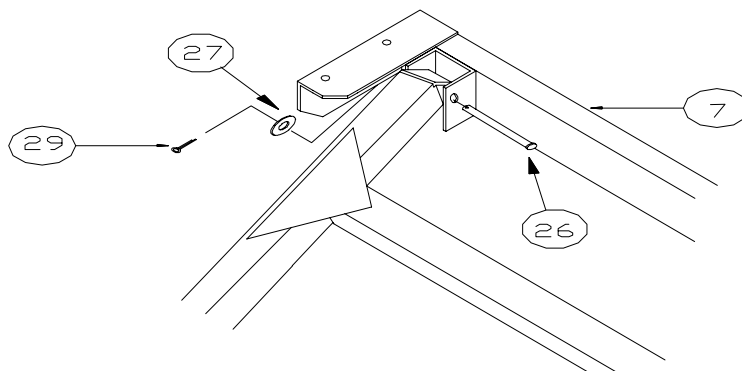
STEP 4.

Find the front bed cross tube (**REF. NO. 6**) (the tube has large angles welded on the end that come up to the ends of the pivot channels) Also, locate the bed pulley bracket (**REF. NO. 10**) and pulley-lifting arm, clevis pin and washers (**REF. NO. 28 & 27**). (5/8" X 7 1/2" clevis pin and 5/8" washers on 3000lb.-4000lb. models and 1/2" X 6" clevis pin 1/2" washers on 2000lb model) Place the pivot channels of the front bed cross tube into the ends of the front lifting arm. Place the pulley bracket so that the pulley sheave is toward the outside in between the corner angle and the pivot channel. From the outside pass the clevis pin through the angle, pulley bracket then through the two washers and lifting arm. Place another washer over the clevis pin and secure with pins (**REF. NO. 29**).



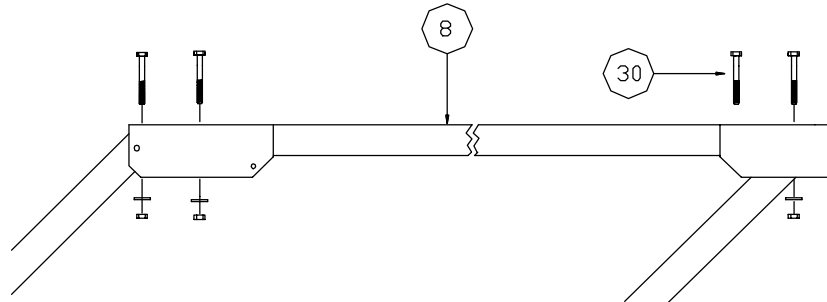
STEP 5.

Fasten the rear bed cross tube (**REF. NO. 7**) to the rear lifting arms with clevis pin, washer, and pin. (**REF. NO. 26, 27 & 29**) (5/8" x 4 1/2" clevis pin on 3000-4000 lb. models and 1/2" x 3" clevis pin on 2000lb. models) .

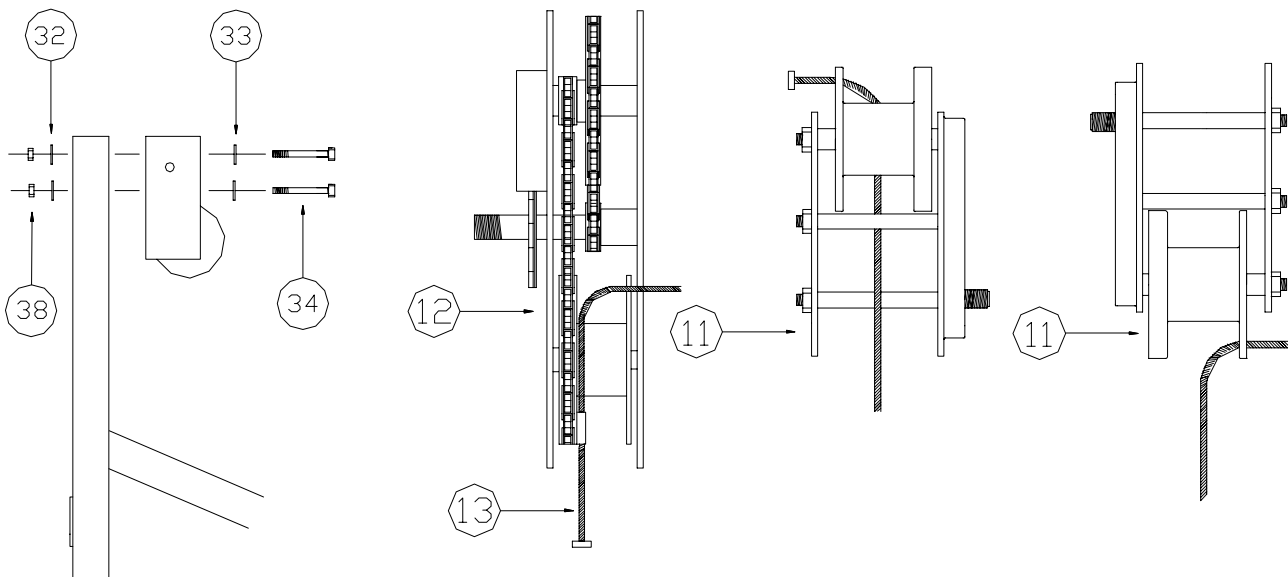


STEP 6.

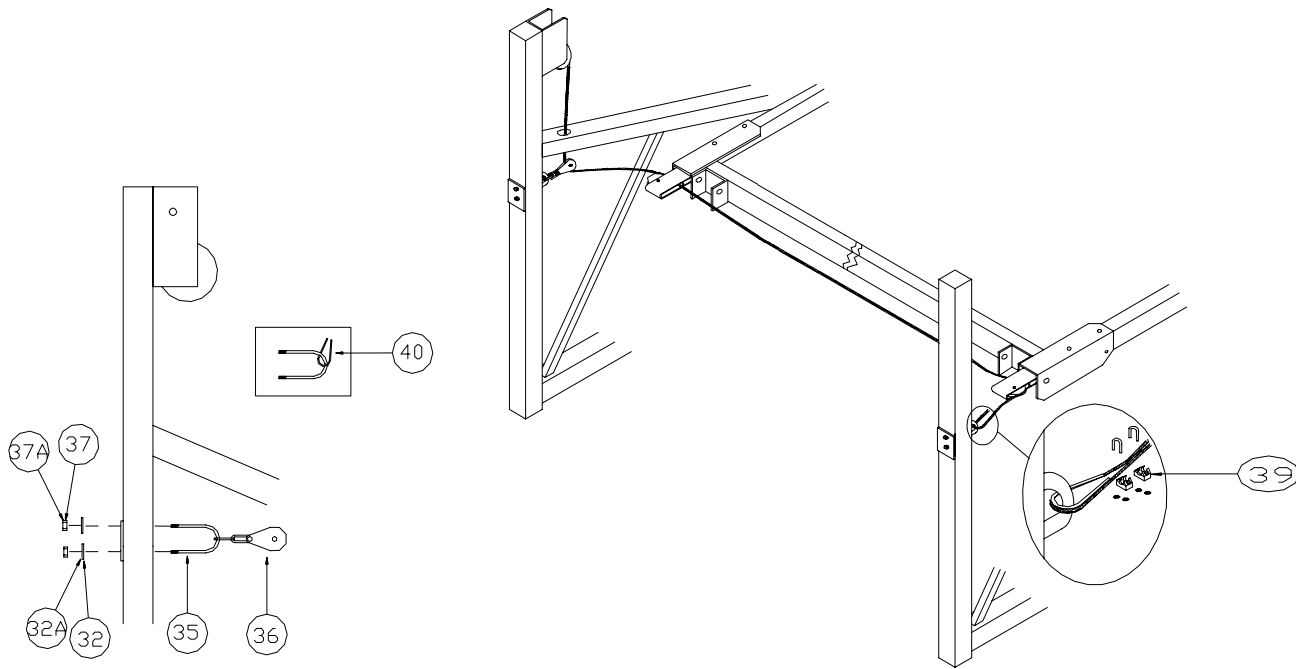
Locate the two top side rail tubes (**REF. NO. 8**) (2"X3" tube on 3000lb. 4000lb. models and 2"X2" tube on 2000lb. models) Bolt the side rail tube to the angles of the cross bed tubes with 1/2" x 4" bolts, washers and nuts on 3000lb.-4000lb. models and use 1/2" x 3" bolts, washers and nuts on 2000lbs. models. (**REF. NO. 30**)



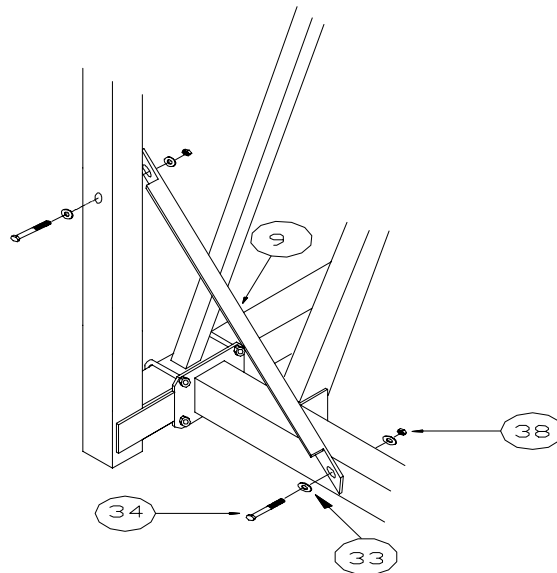
STEP 7. Decide what side the winch is going on. If using a chain drive winch (**REF. NO.12**) the drum of the winch must always be facing down (see separate page for changing winch to meet you desired side) On gear drive winches (**REF. NO. 11**) the winch is simply turned over to go either left or right. Bolt the winch to the inside of the front upright using 3/8" fender washers (**REF. NO. 32**) on the tube side and standard 3/8" washers (**REF. NO. 33**) on the winch side. Use 3/8"x 3 1/2" bolts for 2000lb model, use 3/8"x 4" bolts on 3000lb. model and 3/8" x 4 1/2" bolt on the 4000lb. model. (**REF. NO. 34**). Secure with 3/8" standard nut (**REF. NO. 38**). Find the lift cable (**REF. NO. 13**), thread the plain end of the cable through the hole in the side of the winch drum on the gear drive winch. On the chain drive winches slide the cable through the wide side of the v pocket welded to the inside of the winch drum side.



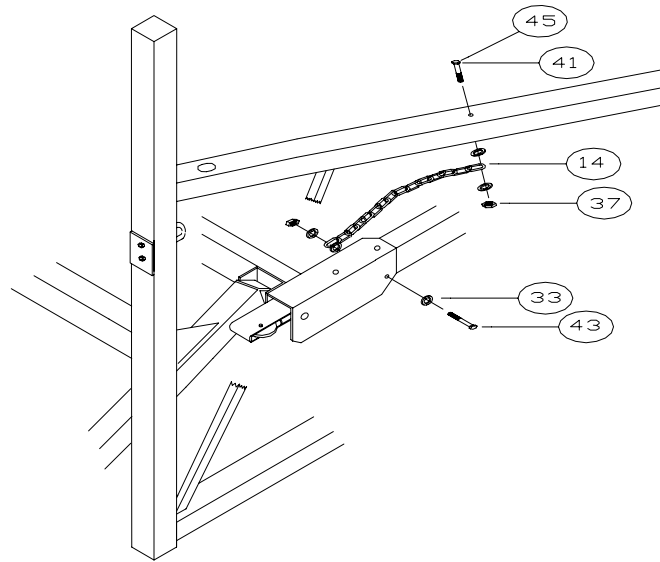
STEP 8. Locate the two round U bolts (**REF. NO. 35**) and the one pulley and chain assembly (**REF. NO. 36**). Place the U bolt through the chain link and into the two holes directly below the winch and diagonal tube of the side member. Secure the U bolt with 7/16" washers and nylock nuts (**REF. NO. 32A & 37A**) on 3000lb.-4000lb. models and 3/8" fender washers and nylock nuts on 1200lb.-2000lb. models (**REF. NO. 32 & 37**). Only finger tighten nuts at this time. Place the other U bolt through the cable thimble (**REF. NO. 40**) and secure to opposite side member in the same manner. Pass the cable through the hole in the diagonal brace tube and the pulley sheave in the pulley bracket below it. Now, run the cable up to and through the pulley on the front bed cross tube across to and through the other pulley. Bring the cable back up to the other U bolt around the cable thimble and secure with cable clamps. (**REF. NO. 39**). On the 3000lb.-4000lb. models use two clamps. Install lift wheel (**REF. NO. 20**) on winch and secure with winch hardware. Turning lift wheel clockwise raise the bed of the lift 3/4 of the way up. Check the cable clearance in the hole of the diagonal brace tube of the side member. Adjust U bolt nuts, if necessary, until cable is clear.



STEP 9. Find the two front angle braces (**REF. NO. 9**) (description 1/4"X 1 1/2" X 2" X 33 5/8" with slotted holes on each end) Bolt the one end to the inside face of the front upright tube with a 3/8"x 4 1/2" bolt for 4000lb model, 3/8"x 4" bolt for 3000lb. model, 3/8"x 3 1/2" bolt for 2000lb. model. Use 3/8" washers and nuts. (**REF. NO. 34, 33 & 38**) Bolt the other end to the side of the bottom cross tube using the same size bolt, washer and nuts. Tighten up bottom cross member nut first so that the slot is about in the middle of the bolt. Check front upright for straightness. Adjust upright if necessary and tighten bolt in upright tube.



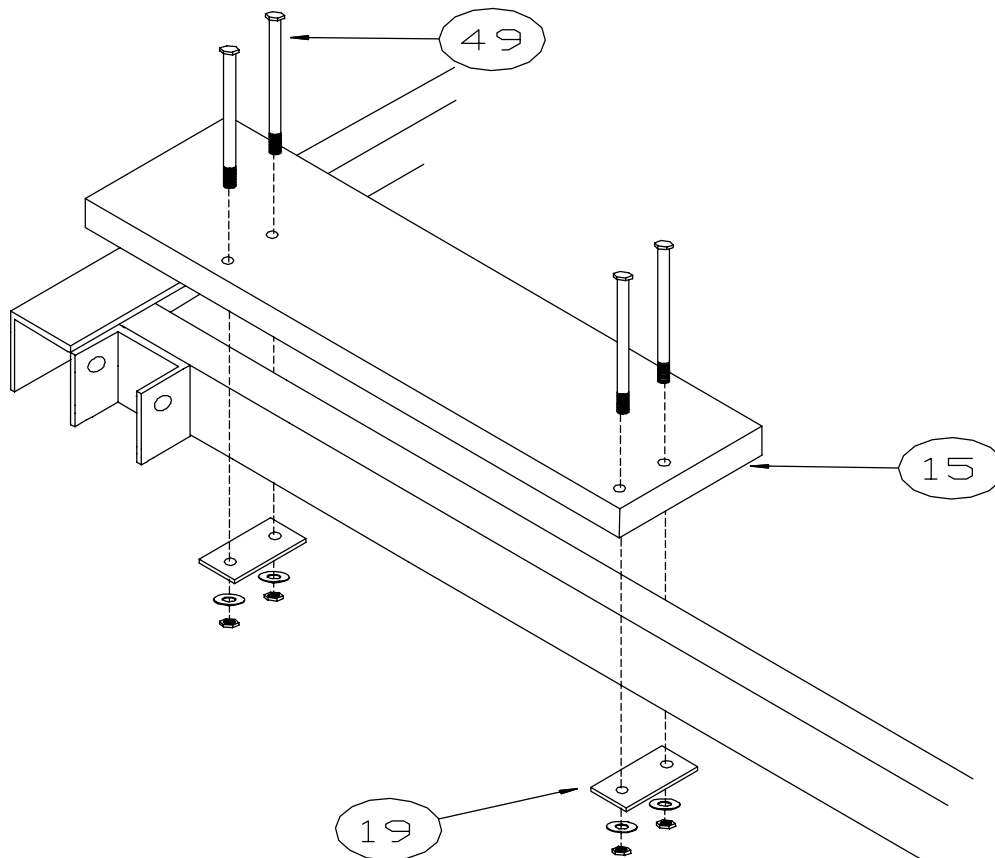
STEP 10. Take the two stop chains (**REF. NO. 14**) and bolt the one end to the bottom side of the diagonal brace tube of the side member using a 3/8" x 4" bolt (**REF. NO. 41**) for 4000lb. models, 3/8" X 3 1/2" bolt (**REF. NO. 41**) for 3000lb. models and 3/8" x 3" bolt (**REF. NO. 45**) for 2000lb. models. Place the chain link between two 3/8" washers and secure with a 3/8" nylock nut (**REF. NO. 41, 33 & 42**). Tighten enough so that the nylock nut is fully engaged with the thread of the bolt, yet chain should still turn freely. Fasten the other end of the chain to the inside of the bottom corner of the angle of the top bed cross tube with a 3/8" x 1 1/2" bolt, washer and nylock nut. (**REF. NO. 43,33 & 42**). Again tighten the nylock nut so that the nylon of the nut is engaged with the thread of the bolt, but the chain can still turn freely.



STEP 11.

APL BUNK SYSTEM 2000lb. - 4000lb. LIFTS

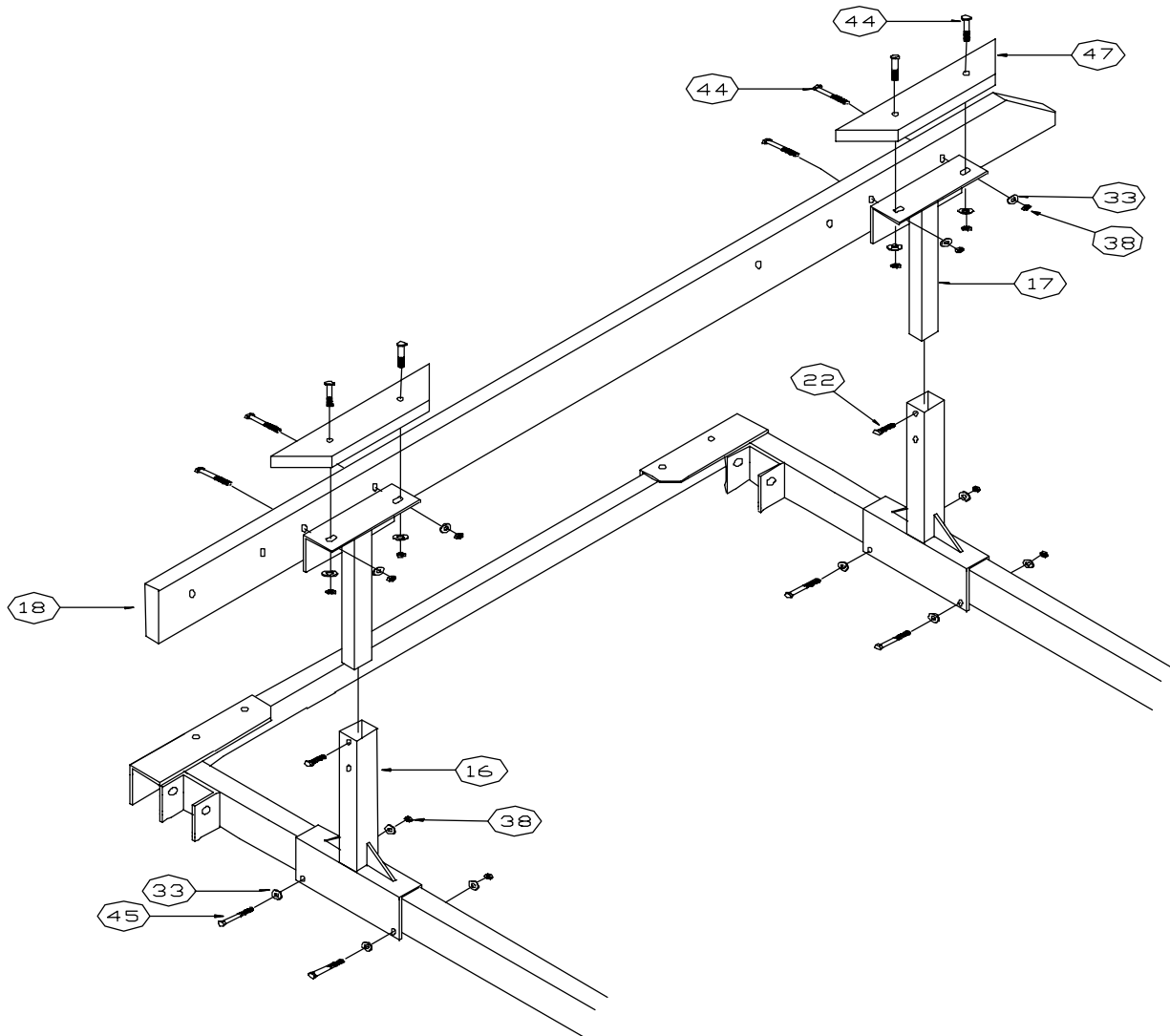
Locate the four 2" x 8" x 30" bed members (**REF. NO. 15**). Place the bed members over the top bed cross tubes so that more of the bed member over hang is towards the inside of the lift and the two holes that are farthest from the end of the bed member is toward the outside corners of the lift. Place four 3/8" x 7 1/2" carriage bolts (**REF. NO. 49**) into the holes of the bed member. From under the bed cross tube slide a backer plate (**REF. NO. 19**) onto the carriage bolts and secure with 3/8" washers and nuts.



STEP 12. DPL BUNK SYSTEM

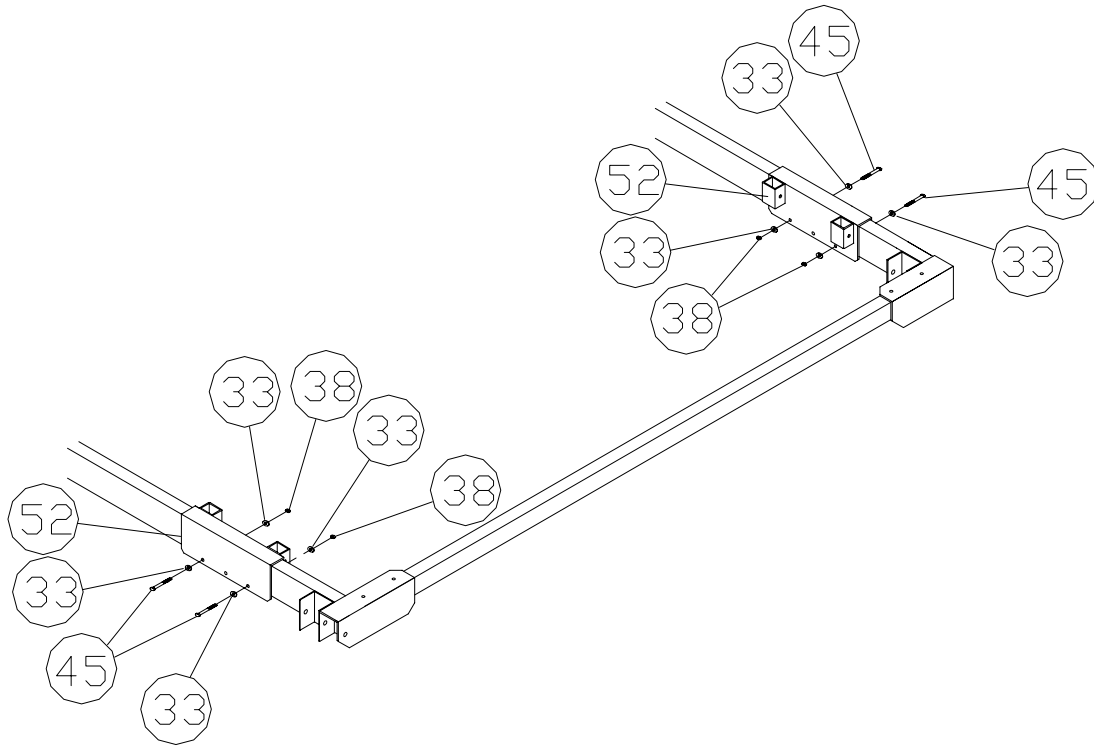
Find the four bottom mounting brackets (large channel with an upright tube in the center **REF. NO. 16**) set the bottom brackets over the top cross tubes of the lift. Place 3/8" x 3" bolts, washers and nuts (**REF. NO. 45,33 & 38**) into the bottom holes. Set according to inside width of pontoon floats and tighten nuts. Locate the top rail bracket (angle with a tube in the center) (**REF. NO. 17**) with the tube of the top bracket to the inside of the lift and the flat part of the angle to the outside, place the rail bracket into the tubes of the bottom mounting bracket. Bolt the long 2 x 8 x 14' rail boards (**REF. NO. 18**) to the side of the top rail bracket with 3/8" x 2 1/2" carriage bolts, washer and nut (**REF. NO. 44, 33 & 38**). Have the 45 degree cut end of the rail board to the back of the lift. Bolt the four 2" x 4" skid boards (**REF. NO 47**) to the top of the top rail bracket using 3/8" x 2 1/2" carriage bolts.

Place the 1/2" x 1" set screws (**REF. NO. 22**) into the bottom mounting brackets. Set to height (usually 1" to 2" higher than the pontoon floats) and tighten set screws.

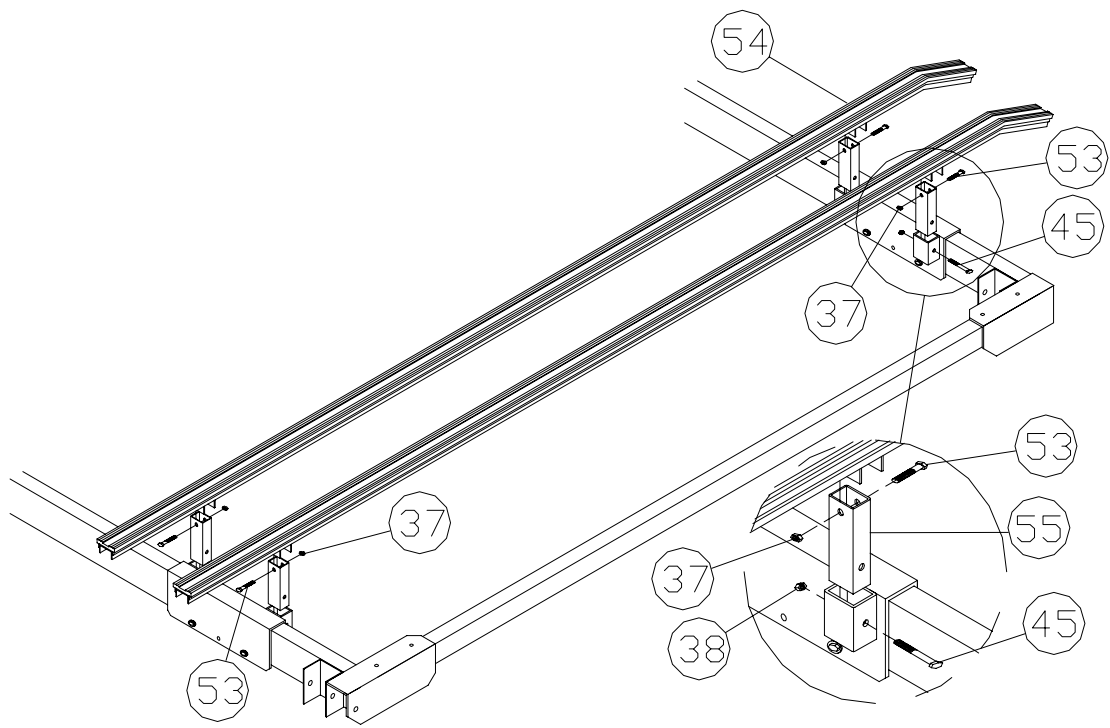


STEP 13. FPB BUNK SYSTEM

Raise the bed of the lift to working height. Set the bunk brackets (**REF. NO. 52**) over the front and rear cross bars of the lifts bed with the pockets toward the center of the lift. Set to desired width and secure with 3/8" X 3" bolts, washers and nuts (**REF. NO. 45, 33, & 38**). NOTE: on 4000 lb. models it may be necessary to use only the center hole, or the center hole and one of the outside holes if the truss is in the way.



STEP 14. Place the bunk upright (**REF. NO. 55**) into the pocket and secure with 3/8" X 3" bolt and nut (**REF. NO. 45 & 38**). Place the bunk on the uprights with the tapered end toward the back of the lift. Secure with 3/8" X 2 1/2" bolts and lock nuts (**REF. NO. 53 & 37**). Tip bunks inward slightly and tighten bolts so that the bunks will not turn freely but can pivot when weight is applied.



PARTS LIST 2000 LB. PONTOON LIFTS

20113 PONTOON LIFT

APL

DPL

REF. NO.	PART NO.	DESCRIPTION	115A	116A
1	61H	LEVELING LEG	4	4
2	43E	SIDE MEMBER RIGHT	1	1
3	33E	SIDE MEMBER LEFT	1	1
4	25G	BOTTOM CROSS TUBE 20113	2	2
5	19G	LIFTING ARMS 20113	2	2
6	22H	FRONT BED CROSS TUBE 20113	1	1
7	27H	REAR BED CROSS TUBE 20113	1	1
8	41405	TOP SIDE RAIL	2	2
9	41500	DIAGONAL FRONT	2	2
10	99C	PULLEY BRACKET 3 "	2	2
11	3016	WINCH DL 1502	1	1
13	3054	CABLE 1/4" X 26'	1	1
14	3073	CHAIN STOP 3/16" X 32 LINK	2	2
15	50059	BED MEMBER	4	--
16	11C	BOTTOM MOUNTING BRKT	--	4
17	12C	TOP RAIL BRACKET	--	4
18	50200	RAIL BOARD	--	2
19	50144	BACKER PLATE	8	--
20	51E	LIFT WHEEL DL	1	1
21	4504	SPINNER KNOB	1	1
22	5174	SET SCREW 1/2" X 1"	4	12
23	5046	U BOLT SQ. 7/16" X 3 X 2.75"	8	8
24	5156	FLANGE NUT 3/8"	16	16
25	3313	BRASS BUSHING 5/8" X 2"	8	8
26	5097	CLEVIS PIN 1/2" X 3"	6	6
27	5071	WASHER 1/2"	20	20
28	5096	CLEVIS PIN 1/2" X 6 1/2"	2	2
29	5025	COTTER PIN 1/8" X 1 1/4"	8	8
30	5122	BOLT 1/2" X 3"	8	8
31	5058	NUT 1/2"	8	8
32	5067	FENDER WASHER 3/8"	6	6
33	5070	WASHER 3/8"	36	52
34	5085	BOLT 3/8" X 3 1/2"	6	6
35	5049	U-BOLT 3/8" ROUND	2	2
36	E75	PULLEY 2 1/2" 2 LINK	1	1
37	5038	NUT 3/8" NYLOCK	8	8
38	5056	NUT 3/8" STANDARD	22	30
39	5004	CABLE CLAMP 1/4"	1	1
40	5044	CABLE THIMBLE 1/4"	1	1
43	5155	BOLT 3/8" X 1 1/2"	2	2
44	5195	BOLT CARRIAGE 3/8" X 2 1/2"	--	16
45	5084	BOLT 3/8" X 3"	2	10
46	3828	CAP .343 X .50"	4	4
47	50201	SKID BOARD	--	4
49	5186	BOLT CARRIAGE 3/8" X 7 1/2"	16	--
50	3822	CAP 2 1/2" SQUARE GRAY	3	3

PARTS LIST 3000 LB. PONTOON LIFTS**30113 PONTOON LIFT**

REF. NO.	PART NO.	DESCRIPTION	APL	DPL	FPB
			127A 227A	128A 228A	130A 264A
1	60H	LEVELING LEG	4	4	4
2	43E	SIDE MEMBER RIGHT	1	1	1
3	33E	SIDE MEMBER LEFT	1	1	1
4	27G	BOTTOM CROSS TUBE 30113	2	2	2
5	26G	LIFTING ARMS 40113	2	2	2
6	24E	FRONT BED CROSS TUBE 30113	1	1	1
7	25E	REAR BED CROSS TUBE 30113	1	1	1
8	41405	TOP SIDE RAIL	2	2	2
9	41500	DIAGONAL FRONT	2	2	2
10	99D	PULLEY BRACKET 3 1/2"	2	2	2
11	3003	WINCH DL 2503	1	1	1
12	3H	WINCH CHAIN DRIVE 11-1	1	1	1
13	3054	CABLE 1/4" X 26'	1	1	1
14	3073	CHAIN STOP 3/16" X 32 LINK	2	2	2
15	50059	BED MEMBER	4	--	--
16	11C	BOTTOM MOUNTING BRKT	--	4	--
17	12C	TOP RAIL BRACKET	--	4	--
18	50200	RAIL BOARD	--	2	--
19	50144	BACKER PLATE	8	--	--
20	51E/45F	LIFT WHEEL DL / CHAIN DRIVE	1	1	1
21	4504	SPINNER KNOB	1	1	1
22	5174	SET SCREW 1/2" X 1"	4	12	4
23	5047	U-BOLT SQ. 7/16" X 2 1/2 X 3.50"	8	8	8
24	5158	FLANGE NUT 7/16"	16	16	16
25	3312	BRASS BUSHING 3/4" X 3"	8	8	8
26	5095	CLEVIS PIN 5/8" X 4 1/2"	6	6	6
27	5072	WASHER 5/8"	12	12	12
28	5098	CLEVIS PIN 5/8" X 7 1/2"	2	2	2
29	5025	COTTER PIN 1/8" X 1 1/4"	8	8	8
30	5112	BOLT 1/2" X 4"	8	8	8
31	5058	NUT 1/2"	8	8	8
32	5067	FENDER WASHER 3/8"	2	2	2
32A	5069	WASHER 7/16"	4	4	4
33	5070	WASHER 3/8"	38	54	38
34	5089	BOLT 3/8" X 4"	7	7	7
35	5050	U-BOLT RD 7/16" X 2.25 X 5.625"	2	2	2
36	E90	PULLEY 3" 2 LINK	1	1	1
37	5038	NUT 3/8" NYLOCK	4	4	12
37A	5171	NUT 7/16" NYLOCK	4	4	4
38	5056	NUT 3/8" STANDARD	23	31	22
39	5004	CABLE CLAMP 1/4"	2	2	2
40	5044	CABLE THIMBLE 1/4"	1	1	1
41	5085	BOLT 3/8" X 3 1/2"	2	2	2
43	5155	BOLT 3/8" X 1 1/2"	2	2	2
44	5195	BOLT CARRIAGE 3/8" X 2 1/2"	--	16	--
45	5084	BOLT 3/8" X 3"	--	8	16
46	3826	CAP .406 X .50"	4	4	4
47	50201	SKID BOARD	--	4	--
49	5186	BOLT CARRIAGE 3/8" X 7 1/2"	16	--	--
50	5071	WASHER 1/2"	8	8	8
51	3823	CAP 3" SQUARE GRAY	3	3	3
52	48F	BUNK BRACKET DOUBLE FPB	--	--	4
53	5083	BOLT 3/8" X 2 1/2"	--	--	8
54	65C	BUNK & PAD 136.5"	--	--	4
55	50335	BUNK UPRIGHT	--	--	8

PARTS LIST 4000 LB. PONTOON LIFTS

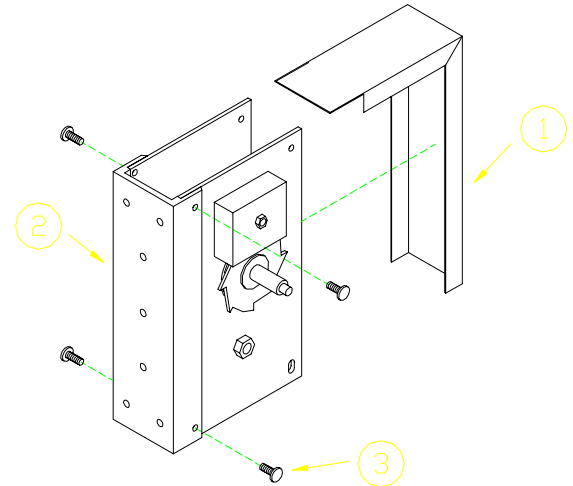
40113 PONTOON LIFT

REF. NO.	PART NO.	DESCRIPTION	APL	DPL	FBP
			234A	235A	267A
1	58H	LEVELING LEG	4	4	4
2	43E	SIDE MEMBER RIGHT	1	1	1
3	33E	SIDE MEMBER LEFT	1	1	1
4	27G	BOTTOM CROSS TUBE 30113	2	2	2
5	26G	LIFTING ARMS 40113	2	2	2
6	24E	FRONT BED CROSS TUBE 30113	1	1	1
7	25E	REAR BED CROSS TUBE 30113	1	1	1
8	41405	TOP SIDE RAIL	2	2	2
9	41500	DIAGONAL FRONT	2	2	2
10	99D	PULLEY BRACKET 3 1/2"	2	2	2
12	4H	WINCH CHAIN DRIVE 15 - 1	1	1	1
13	3047	CABLE 5/16" X 26'	1	1	1
14	3073	CHAIN STOP 3/16"X 32 LINK	2	2	2
15	50059	BED MEMBER	4	--	--
16	11C	BOTTOM MOUNTING BRKT	--	4	--
17	12C	TOP RAIL BRACKET	--	4	--
18	50200	RAIL BOARD	--	2	--
19	50144	BACKER PLATE	8	--	1
20	45F	LIFT WHEEL CHAIN DRIVE	1	1	1
21	4504	SPINNER KNOB	1	1	1
22	5174	SET SCREW 1/2" X 1"	4	12	4
23	5048	U-BOLT SQ. 7/16" X 3" X 4"	8	8	8
24	5158	FLANGE NUT 7/16"	16	16	16
25	3312	BRASS BUSHING 3/4" X 3"	8	8	8
26	5095	CLEVIS PIN 5/8" X 4 1/2"	6	6	6
27	5072	WASHER 5/8"	12	12	12
28	5098	CLEVIS PIN 5/8" X 7 1/2"	2	2	2
29	5025	COTTER PIN 1/8" X 1 1/4"	8	8	8
30	5112	BOLT 1/2" X 4"	8	8	8
31	5058	NUT 1/2"	8	8	8
32	5067	FENDER WASHER 3/8"	2	2	2
32A	5069	WASHER 7/16"	4	4	4
33	5070	WASHER 3/8"	40	56	36
34	5087	BOLT 3/8" X 4 1/2"	7	7	7
35	5051	U-BOLT RD 7/16"X 2.25 X 5.9375"	2	2	2
36	E90	PULLEY 3" 2 LINK	1	1	1
37	5038	NUT 3/8" NYLOCK	4	4	12
37A	5171	U-BOLT NUT 7/16" NYLOCK	4	4	4
38	5056	NUT 3/8" STANDARD	24	32	14
39	5078	CABLE CLAMP 5/16"	2	2	2
40	5099	CABLE THIMBLE 5/16"	1	1	1
41	5089	BOLT 3/8" X 4"	2	2	2
43	5155	BOLT 3/8" X 1 1/2"	2	2	2
44	5195	BOLT CARRIAGE 3/8" X 2 1/2"	--	16	--
45	5084	BOLT 3/8" X 3"	--	8	8
46	3826	CAP .406" X .50"	4	4	4
47	50201	SKID BOARD	--	4	--
49	5186	BOLT CARRIAGE 3/8" X 7 1/2"	16	--	--
50	5071	WASHER 1/2"	8	8	8
51	3824	CAP 3 1/2" SQUARE GRAY	3	3	3
52	48F	BUNK BRACKET DOUBLE FPB	--	--	4
53	5083	BOLT 3/8" X 2 1/2"	--	--	8
54	65C	BUNK & PAD 136.5"	--	--	4
55	50355	BUNK UPRIGHT	--	--	8

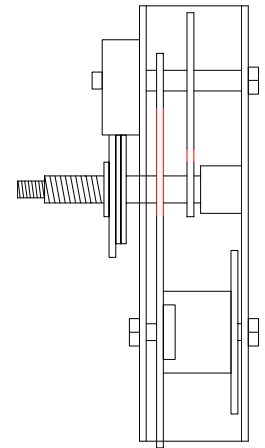
7-7

REVERSING WINCH WHEEL SHAFT LOCATION

STEP 2. Remove the light walled cover plate (**Ref. No. 1**) from the front of the winch by pulling out on the bottom. Remove the four 3/8" X 1" carriage bolts (**Ref. No. 3**) from the back mounting channel (**Ref. No 2**).



STEP 3. Refasten the back mounting channel (**Ref. No. 2**) to the opposite side it was removed from or mount it to the inside of the lifts upright first (See Step 1.). Thread cable through pocket on side of winch drum as shown. Replace cover plate (**Ref. No. 1**). Thread on winch wheel, washer, and winch nut.



CHAIN WINCH MOUNTING INSTRUCTIONS

Slide the winch (**Ref. No. 11**) onto the winch upright tube of the side member. Mount the winch using 3/8" x 4" bolts (for 3000 models) or 3/8" X 4 1/2" bolts (for 4000 models), washers, and nuts (**Ref. No. 34, 33, 38**). These should be loose at this time. Align the top hole in the winch and the upright tube so bolt slides in and out easily. Tighten bolts in mounting bracket. Then tighten the bolt in the upright tube with 3/8" fender washer, washer and nut (**Ref. No. 32, 33, & 38**).

