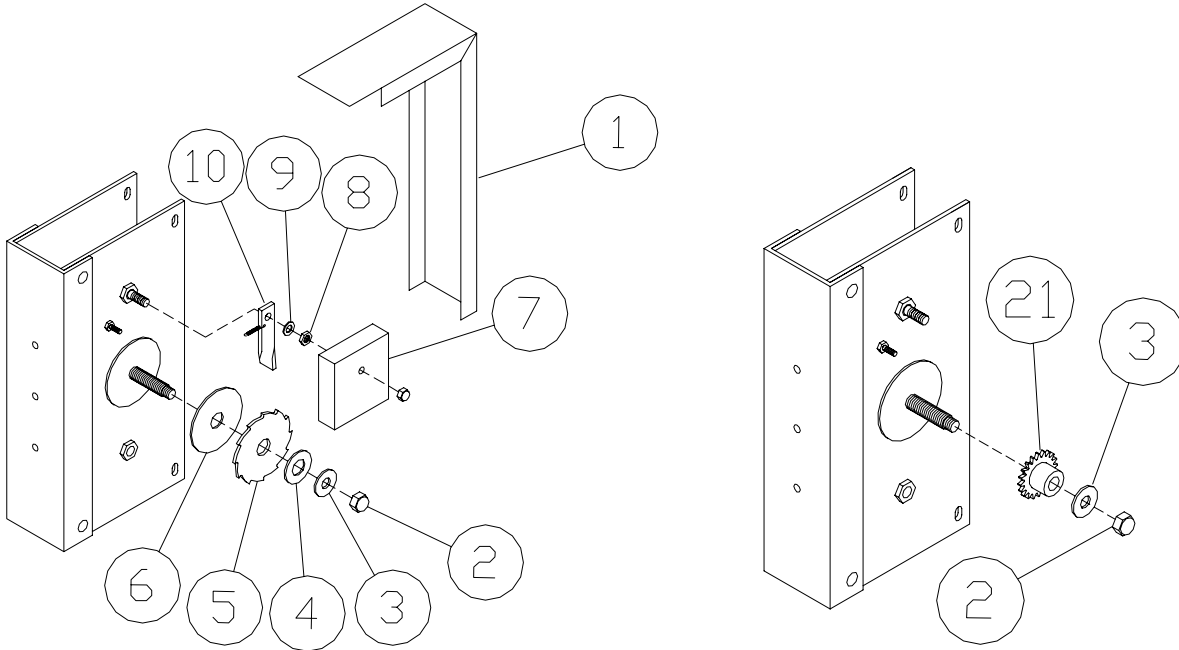


PORTA-DOCK, INC.

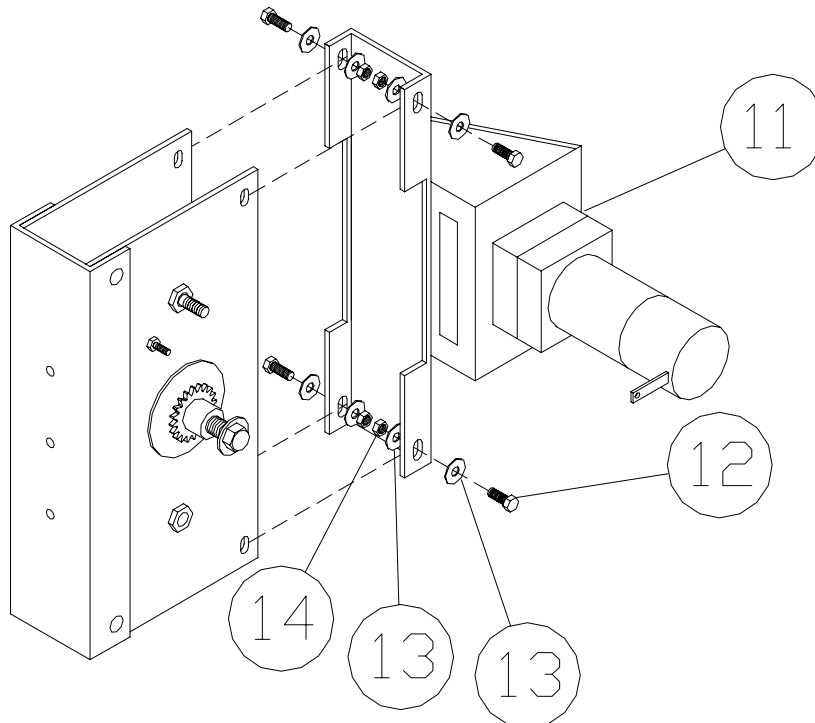
Thank you for purchasing a Porta-Dock product!

WE03 ADD ON ELECTRIC WINCH

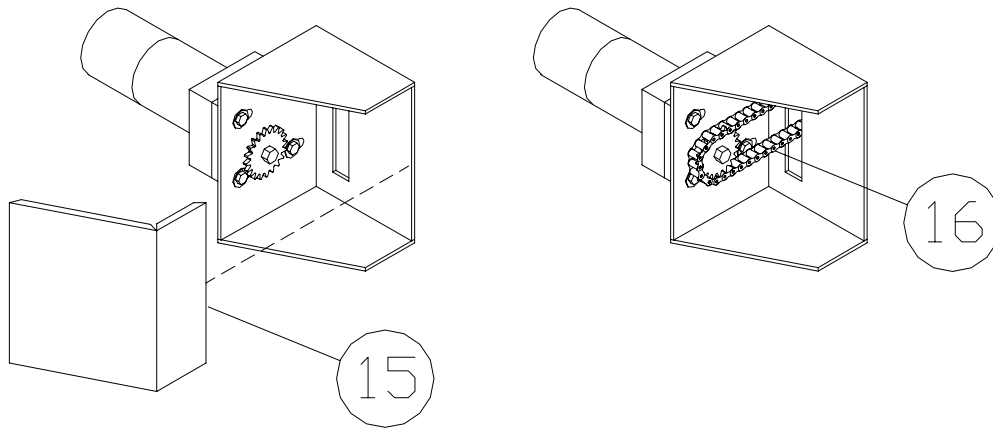
Step 1. Remove the thin aluminum end cover (**Ref. No. 1**) from the winch. Remove the small cover (**Ref. No. 7**) on the side and remove the nut, washer, flipper, and spring (**Ref. No. 8,9,&10**). Remove the nut, the silver colored zinc washer, the brass washer, ratchet gear, and brake pad (**Ref. No. 2,3,4,5,&6**). Thread the sprocket (**Ref. No. 21**) onto the threaded shaft making sure that the teeth of the sprocket are toward the winch and re-install the zinc washer and nut (**Ref. No. 2 & 3**).



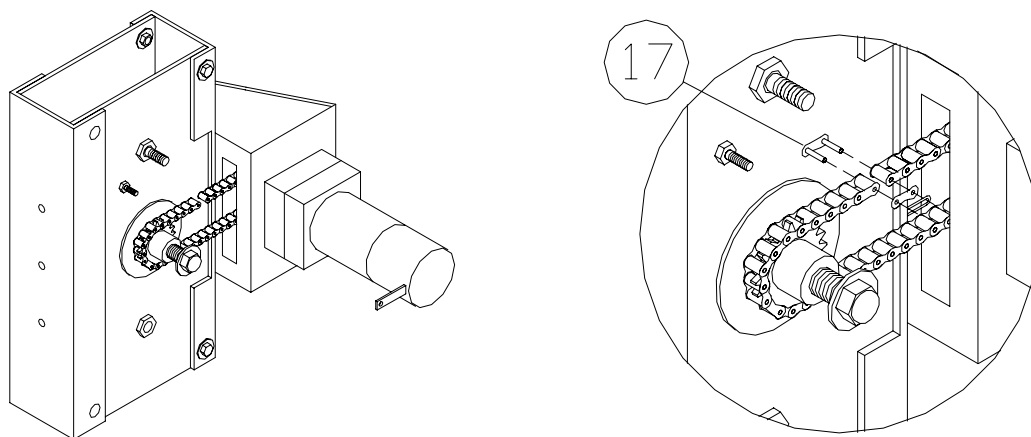
Step 2. Bolt on the electric motor assembly (**Ref. No. 11**) as shown with 3/8" X 1" bolts, washers, and nuts (**Ref. No. 12,13,&14**).



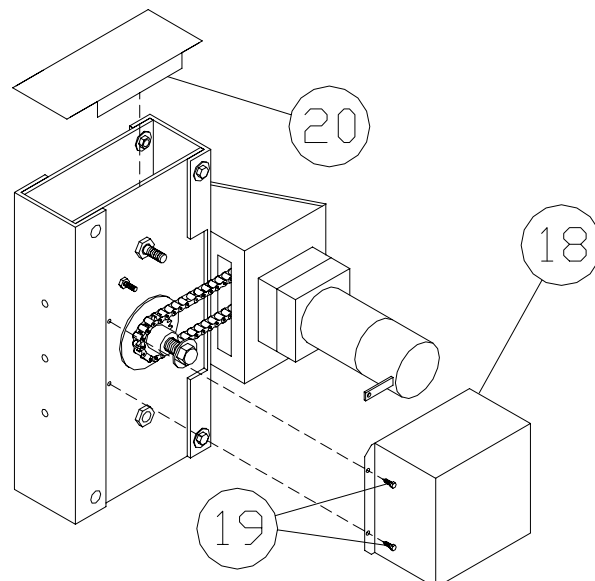
Step 3. Remove the motor cover (**Ref. No. 15**). Install the chain (**Ref. No. 16**) on the sprocket on the motor. Put the ends of the chain through the slot. If the motor bolts are not loose at this time, loosen them so that the motor will slide freely.



Step 4. From the other side wrap the chain around the sprocket on the side of the winch. Install the master link (**Ref. No. 17**) as shown. Pull back on the motor so there is tension on the chain, and tighten the motor bolts. Note: there should be enough tension on the chain so that when it is pushed down it moves no more than a quarter inch. Re-install the motor cover.



Step 5. Set the chain cover (**Ref. No. 18**) on the winch. Line the cover up so the chain is centered in the slot. Mark the holes onto the winch. Remove the cover and drill a 1/8" pilot hole. Install the cover with self tapping screws (**Ref. No. 19**). Install the top cover (**Ref. No. 20**) at this time.



WE03 ELECTRIC WINCH PARTS LIST

<u>REF #</u>	<u>DESCRIPTION</u>	<u>QTY</u>
1	WINCH END COVER	1
2	WINCH NUT	1
3	ZINC WASHER	1
4	BRASS WASHER	1
5	RATCHET GEAR	1
6	BRAKE PAD	1
7	COVER	1
8	NUT	1
9	WASHER	1
10	FLIPPER AND SPRING	1
11	ELECTRIC MOTOR ASSEMBLY	1
12	BOLT 3/8" X 1" BOLT	4
13	3/8" WASHER	8
14	NUT 3/8"	4
15	MOTOR COVER	1
16	CHAIN	1
17	MASTER LINK	1
18	CHAIN COVER	1
19	SELF TAPPING SCREWS	2
20	TOP COVER	1