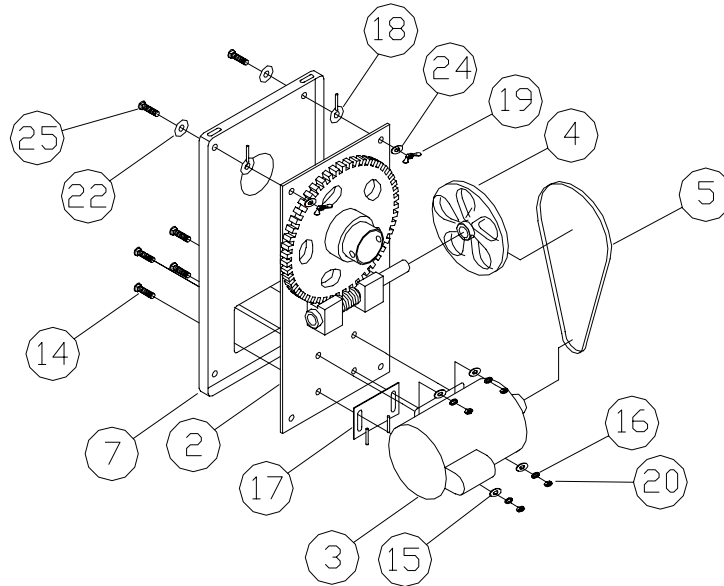


PORTA-DOCK, INC.

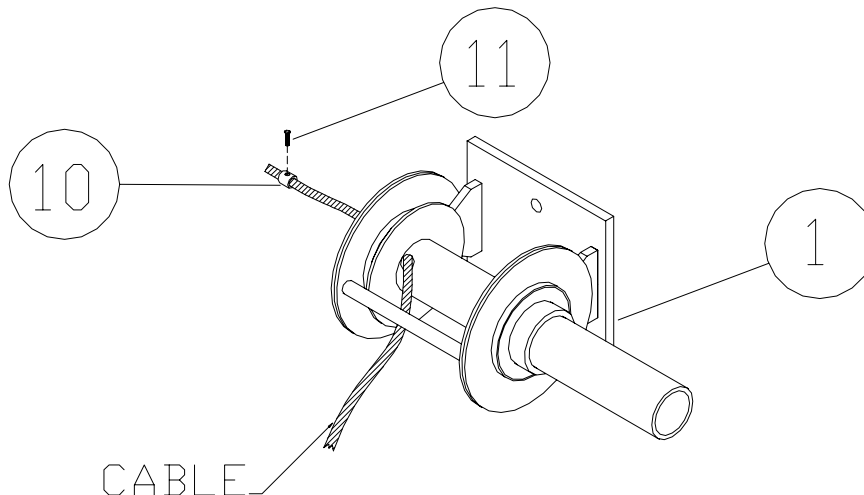
Thank you for purchasing a Porta-Dock product!

WD01/WD02 WORM DRIVE ELECTRIC WINCH

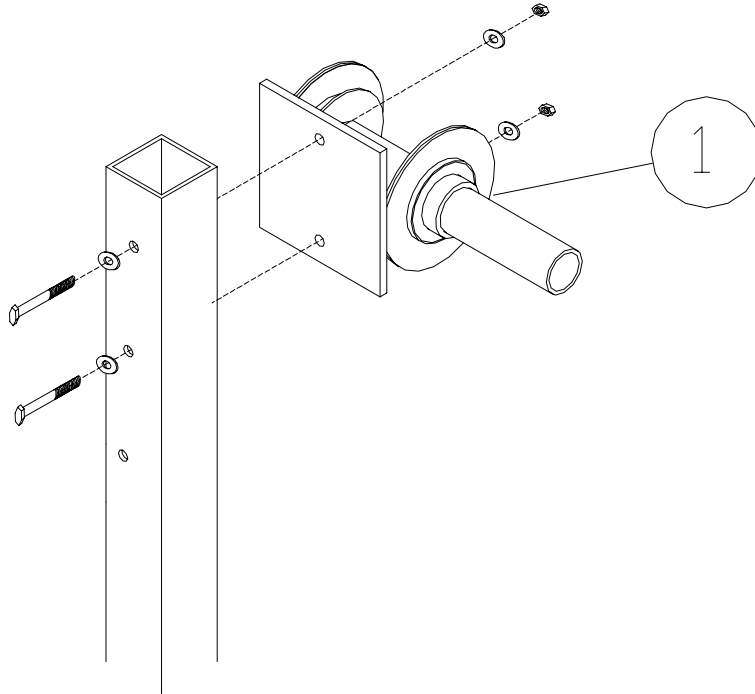
STEP 1. Bolt the motor (**Ref. # 3**) to the gear plate (**Ref. # 2**) with the bottom cover bracket (**Ref. # 17**) (it has the 2 slotted holes and two mounting pins) between the plate and the motor. Secure with 3/16" x 1" carriage bolts, washers, lock washers and nuts (**Ref. # 14, 15, 16 & 20**). Leave loose at this time. Bolt the back plastic cover (**Ref. # 7**) to the plate (**Ref. # 2**) with the top cover brackets (**Ref. # 18**) (washer with mounting pin) between the plate and the back cover. Secure with 5/16" x 1 1/2" carriage bolts, fender washers, washers & wing nuts (**Ref. # 25, 22, 24 & 19**). Slide the 8" pulley (**Ref. # 4**) into the shaft connected to the gears. Check for pulley alignment and secure with the allen-head set screw. Install the belt (**Ref. # 5**) onto the pulleys. Make sure the belt is running straight and adjust pulley if necessary.



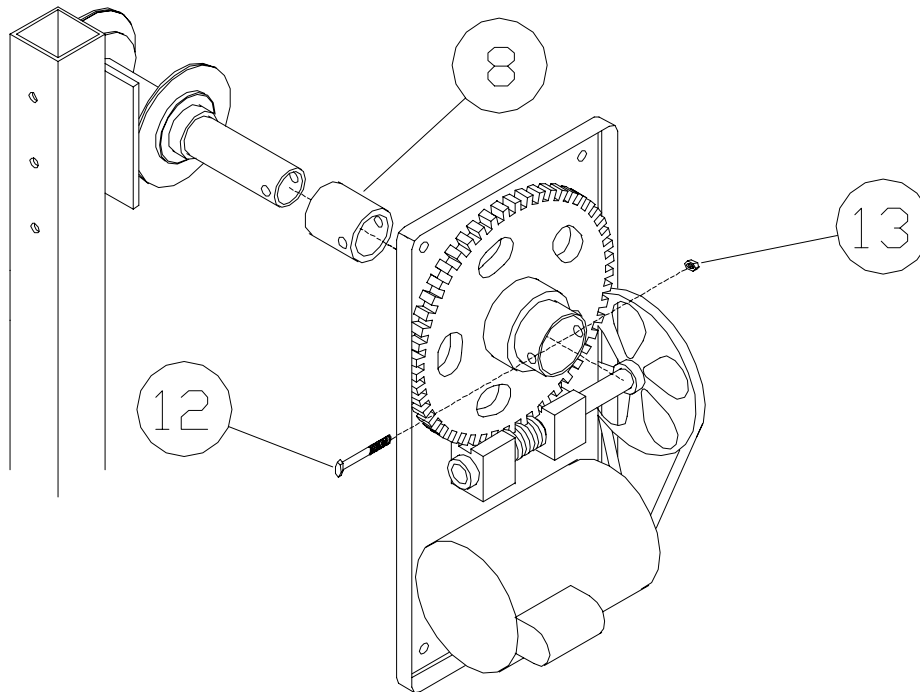
STEP 2. Slide the end of the cable through the hole in the winch drum (**Ref. # 1**). Pull the cable out the end of the drum. Slide the cable stop bushing (**Ref. # 10**) onto the cable, making sure at least a 1/2" of cable is sticking out the end of the bushing. Secure bushing to the cable with 5/16" x 1 1/2" bolt (**Ref. # 11**) Pull the excess cable back into the drum.



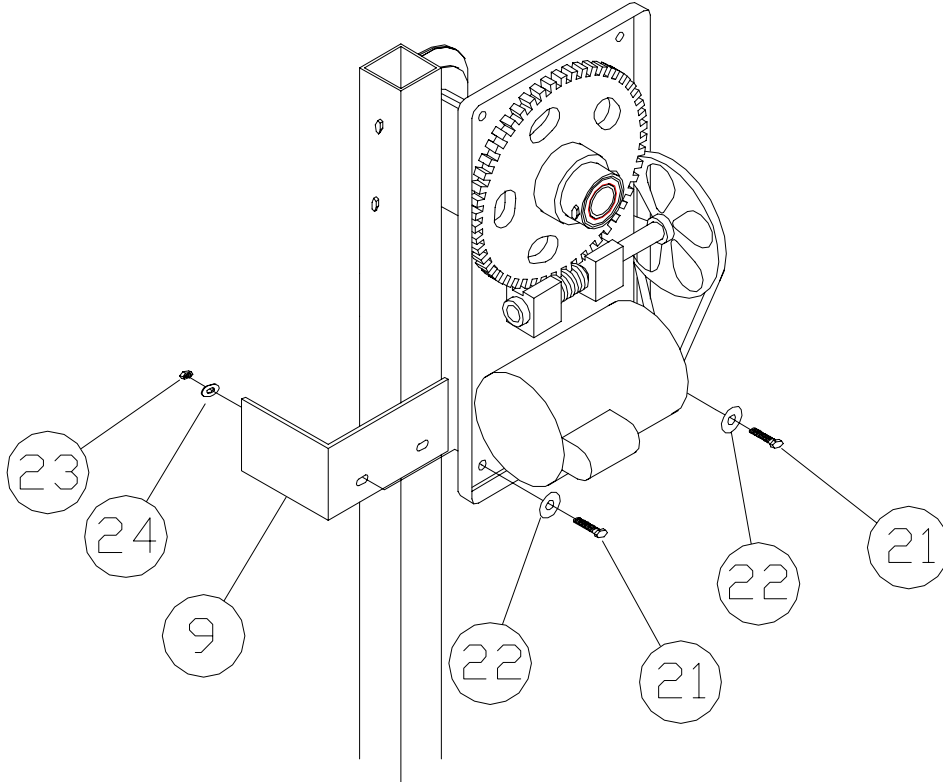
STEP 3. Bolt the winch to the upright of the lift (**Note:** On 3,000 and 4,000 lb. Vertical lift. A 7/16" hole will have to be drilled 3 1/2" down from the center of the top hole) with the bolts, washers & nuts supplied with winch. The drum will be facing the center of the lift with the shaft facing out.



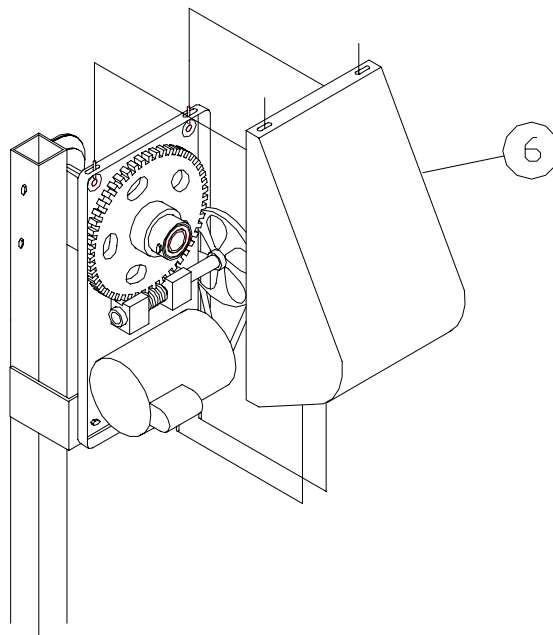
STEP 4. Slide the spacer sleeve (**Ref. # 8**) onto the shaft of the winch drum, lining the holes up. Slide the winch gear assembly on to the winch drum shaft. Lining the three holes up. Secure with the nut (**Ref. # 12 & 13**).



STEP 5. Bolt the support angle (**Ref. # 9**) to the bottom left corner of the winch gear plate so the leg of the angle is against the upright tube of the lift. Secure with 3/8" x 1 1/2" bolt, fender washer, washer & nut (**Ref. # 21 & 22**). Bolt the bottom right hole in the gear plate to the plastic cover with 3/8" x 1 1/2" bolt, washers & nuts.



STEP 6. Test fit the cover on the winch by sliding the holes in the top of the cover over the top mounting pins and the bottom holes in the cover over the bottom mounting pins. Adjust bottom-mounting pins so the cover fits. Tighten the bolts on the motor at this time and re-install cover.



WD01 8" PULLEY & WD02 10" PULLEY WORM DRIVE ELECTRIC WINCH PARTS LIST

REF #	PART #	DESCRIPTION	QTY
1	3155	Winch Drum	1
2	3162	Hefty Hoist Gear Assembly. - 1500 Rhgray DP	1
3	3163	1 HP RD AOS MOTOR - 1422 paz	1
4	3159	8" Pulley #1468 ** WD01	1
	3160	10" Pulley # 1470 ** WD02	1
5	3161	Belt #1450-4L320	1
	3174	Belt #1450-4L360	1
6	3157	Front Cover #1101g	1
7	3156	Back Cover #11021g	1
8	3167	Spacer Sleeve #1245	1
9	50520	Support Angle	1
10	5118	Cable Stop Bushing	1
11	5117	Bolt 5/16" X 1/2"	1
12		Bolt 1/2" X 3 1/2"	1
13		Locknut 1/2"	1
14		Carriage Bolt 5/16" X 1"	4
15		Washer 5/16"	4
16		Lock Washer 5/16" SS #1915	4
17		Bottom Cover Mounting Bracket #1245	1
18		Top Cover Mounting Pin	2
19		Wing Nut 5/16" SS #1901	2
20		Nut 5/16" SS #1905	4
21	5155	Bolt 3/8" X 1 1/2"	2
22	5067	Fender Washer 3/8"	4
23	5056	Nut 3/8"	2
24	5070	Washer 3/8"	4
25		Bolt 5/16" X 1 1/2" SS #1900	2
26		MOTOR BOLT KIT #1770 INCL 4 EACH BOLTS, LOCKWASHERS & NUTS SS	

NOTE: Some parts may need to be ordered by reference #