

**CC6 APD 5' RIGHT CORNER, CC7 5' APD LEFT CORNER**  
**CC4 5' CPD RIGHT CORNER, CC5 5' CPD LEFT CORNER**

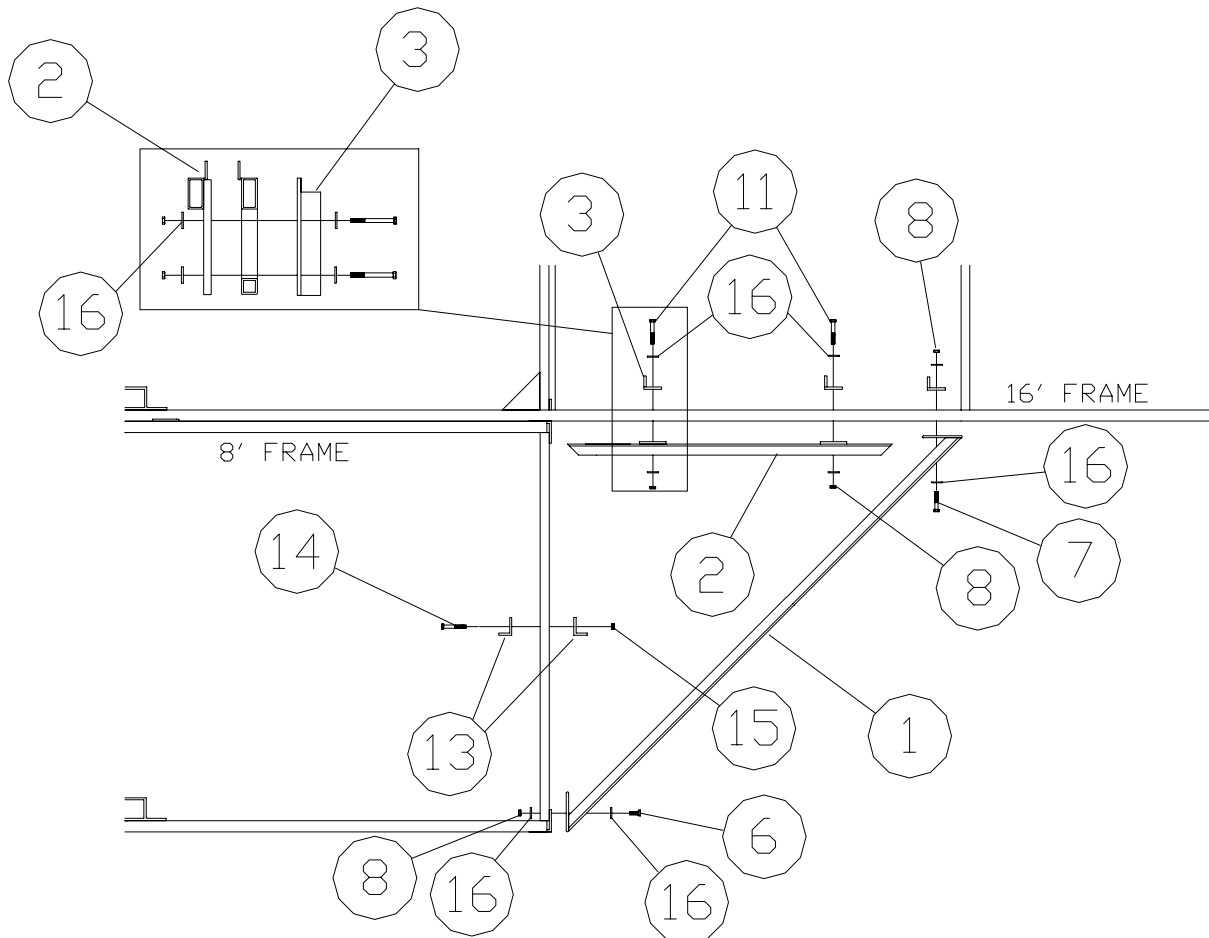
**Thank you for purchasing our product.**

**Please read these instructions and follow them step by step.**

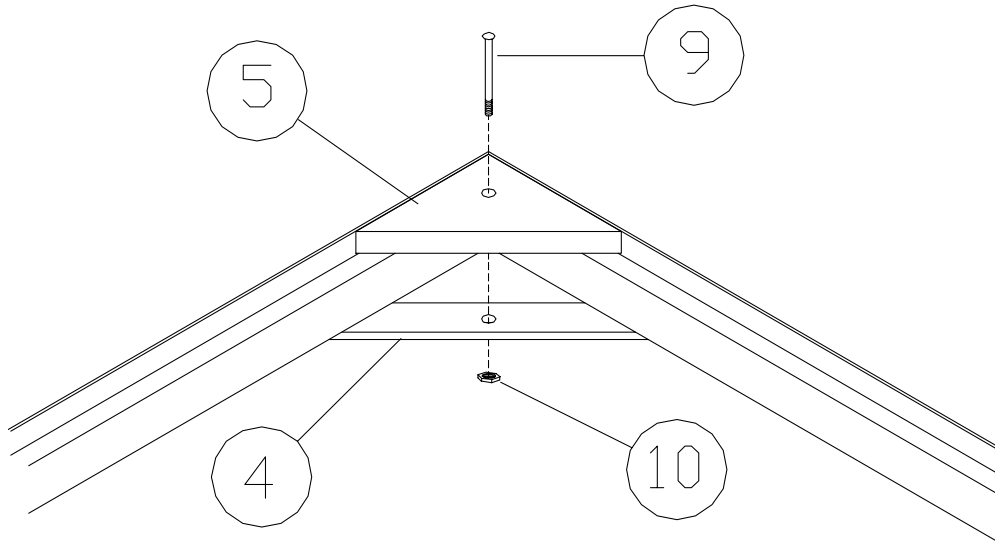
**NOTE: APD corners only, run foam tape on topside of frames (REF. # 1& 2).**

**STEP 1.** Bolt the longer outside corner side frame (**REF. # 1**) to the end corner angle of the 8' L section using two 1/2" X 1" bolts, washers, and nuts (**REF. # 6, 16, & 8**). Clamp the other end to the side of the 16' dock section by placing the backer angle (**REF. # 3**) with the notch end up on the inside of the 16' dock section. Place the 1/2" X 2" bolts and washers (**REF. # 7 & 16**) through the angle and the dock side and into the plate of the corner side frame. Secure with washers, and 1/2" nuts (**REF. # 16 & 8**). **NOTE:** Only Hand tighten all nuts at this time.

**STEP 2.** Clamp the remaining inside corner side frame (**REF. # 2**) to the side of the 16' section midway between 8' section and the diagonal corner side. Secure with two backer angles (**REF. # 3**) and 1/2" X 2 1/2" bolts, washers, and nuts (**REF. # 11, 16, & 8**). Locate the other two remaining angles (**REF. # 13**) and clamp them to the center end of the 8' section using 3/8" X 2" bolts (**REF. # 14**) make sure the top of the angle is no higher than the cross tube of the dock section.



**STEP 3.** Place corner panel into the framework so that the planking is running in the same direction as the panels of the dock. **NOTE:** If necessary, adjust outside corner frame to fit the panel evenly. **TIGHTEN ALL FOUR BOLTS AT THIS TIME.** On CPD models bolt small cedar (**REF. # 5**) to shore end of corner, using 1/4" X 4" carriage bolt and clamping flat (**REF. # 4**).



<b>REF. #</b>	<b>Part #</b>	<b>Description</b>	<b>Qty</b>
1	E20	OUTSIDE CORNER FRAME	1
2	E21	INSIDE CORNER FRAME	1
3	30803	BACKER ANGLE	3
4	50182	5' CPD COR FLAT BACKER	1
5	50024	CORNER BOARD	1
6	5123	1/2" X 1" BOLT	2
7	5125	1/2" X 2" BOLT	2
8	5058	1/2" NUT	8
9	5182	1/4" X 4" CARRIAGE BOLT	1
10	5055	1/4" NUT	1
11	5120	1/2" X 2 1/2"	4
	CC2	4' X 4' ALUMINUM RIGHT CORNER PANEL	1
	CC3	4' X 4' ALUMINUM LEFT CORNER PANEL	1
	BB9	4' X 4' CEDAR RIGHT CORNER PANEL	1
	CC1	4' X 4' CEDAR LEFT CORNER PANEL	1
12	4108	APD FOAM TAPE	1
13	50126	PANEL SUPPORT ANGLES	2
14	5082	3/8" X 2" BOLT	2
15	5056	3/8" NUT	2
16	5069	7/16" WASHER	16