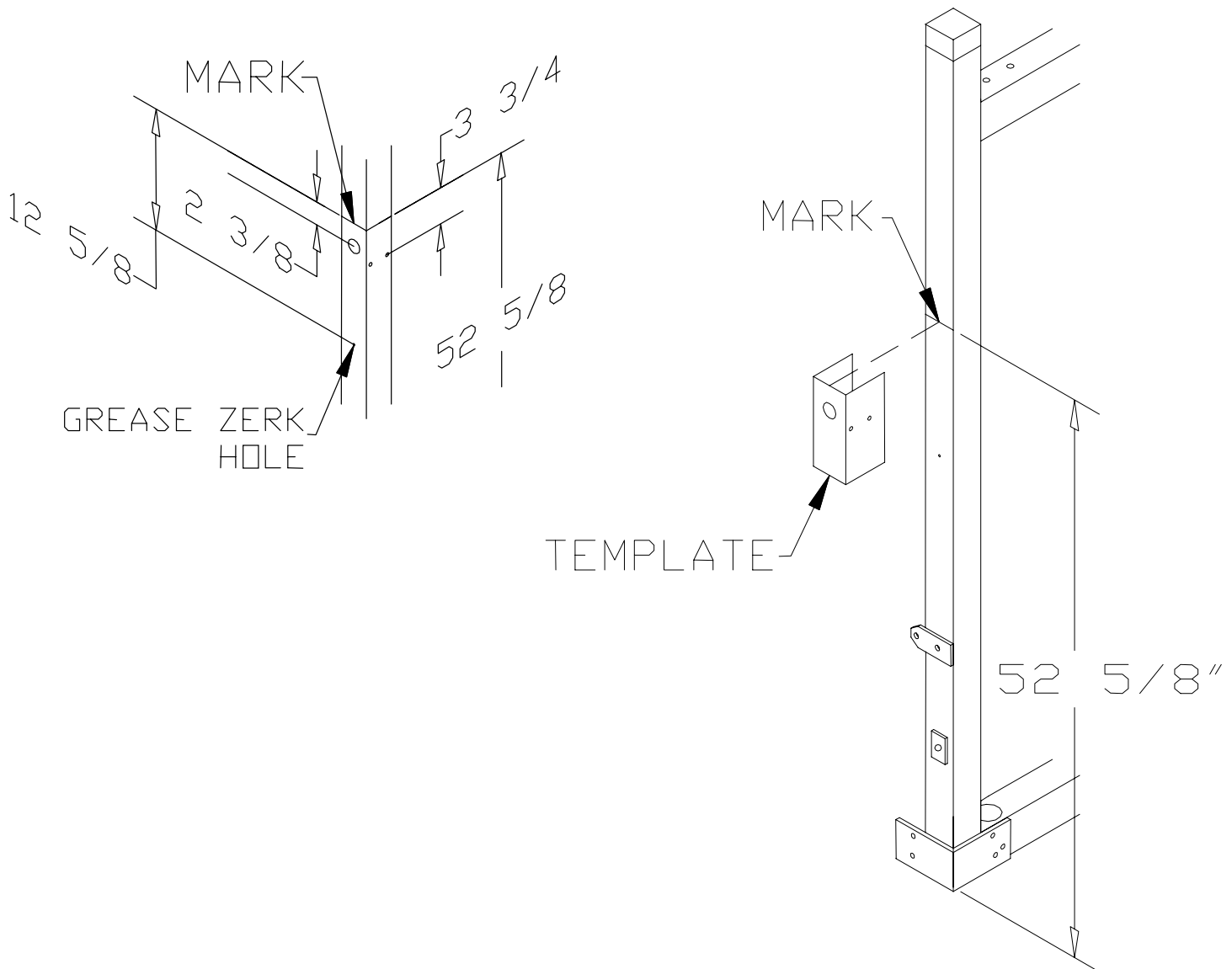


## 90Q 3000V & 92Q 4000V PAIR OF ADD ON LIFT SCREW SYSTEM LEGS

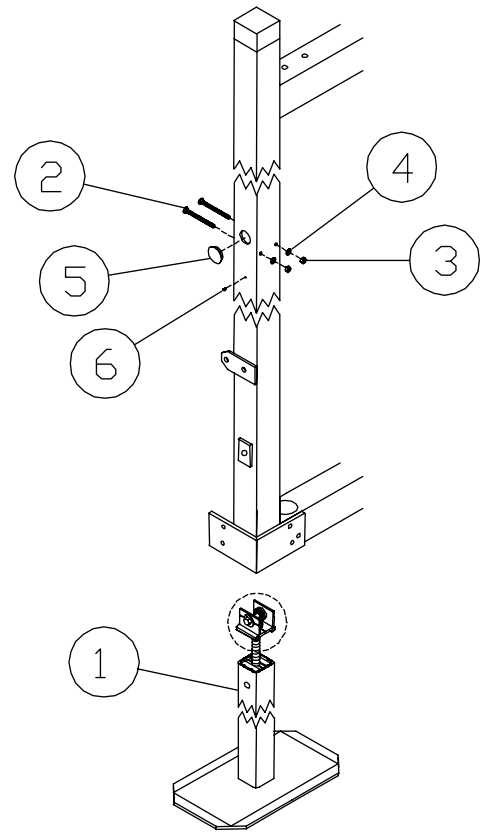
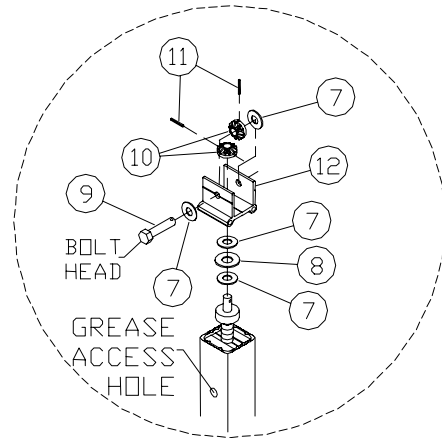
**Thank you for purchasing our product!**  
**\*Please read these instructions and follow them step by step.**

**STEP 1.** Measure up 52 5/8" from the bottom of the lift on the front of each corner post and make a mark. Tape the supplied template to the tube so the top of the template is lined up with the mark. Center punch the center of each hole on the template. Measure down from the mark 12 5/8" and make a mark in the center of the tube for the grease zerk, center punch this mark and drill a 3/16" hole. Remove the template and drill the sized holes shown on the template.



**STEP 2.** Safely support the lift approximately 50" off the ground or disassemble the lift side members from the lift. Remove the leveling legs and set screws.

**STEP 2.** Grease the top gears on the leg. Slide the leg assemblies into the uprights of the lift side making sure that the bolt head on the leg jack driveshaft (REF. NO. 9) will line up with the big hole in the lift upright and the grease access hole in the leg will line up with the grease zerk hole in the lift upright. Bolt the legs in place with 5/16 carriage bolts, washers, and nuts (REF. NO. 2, 4, & 3) making sure that the carriage bolt heads are toward the inside of the lift. Pound the grease zerk (REF. NO. 6) into the small hole below the adjustment hole. Insert an 1 3/8" cap (REF. NO. 5) into each large hole in the lift upright.



REF. #	PART #	DESCRIPTION	QTY
1	75H	LEG ASSEMBLY (3000)	4
	76H	LEG ASSEMBLY (4000)	4
2	5209	5/16" X 3 1/2" CARRIAGE BOLT (3000)	8
	5210	5/16" X 4" CARRIAGE BOLT (4000)	8
3	5054	5/16 NUT	8
4	5068	5/16 WASHER	8
5	3831	1 3/8 CAP GRAY	4
6	5011	3/16 GREASE ZERK	4
7	5203	1/2" STAINLESS STEEL WASHER	16
8	5198	1/2" BRASS WASHER	4
9	5192	1/2" SS LEG JACK DRIVE SHAFT	4
10	3196	BEVELED GEAR	8
11	5236	3/16 X 1 ROLL PIN	8
12	50420	2.47" GEAR YOKE (3000)	4
	50422	2.97" GEAR YOKE (4000)	4

**USE AND MAINTENANCE**

Adjust the height of the lift by turning the bolt head on the leg jack drive shaft with a 3/4" socket and ratchet or a 3/4" socket in a cordless drill. Clockwise will lower the lift, and counter-clockwise will raise the lift. **Do not** use an impact wrench as the hammering effect will cause extra wear on the gears and drive shaft. Each fall when the lift is removed, adjust the leg so it is all the way into the lift. Grease with a non-petroleum based lubricant. Lower the leg 12 inches and grease again. Adjust the leg all the way down then all the way up, this will help distribute the lubricant onto the entire shaft.