

AP10 APD DS L8 X 16' SUNDECK * AW10 CPD DS L8 X 16' SUNDECK ALUMINUM PORTA-DOCK

For Beige Decking Add the Letter B to Model

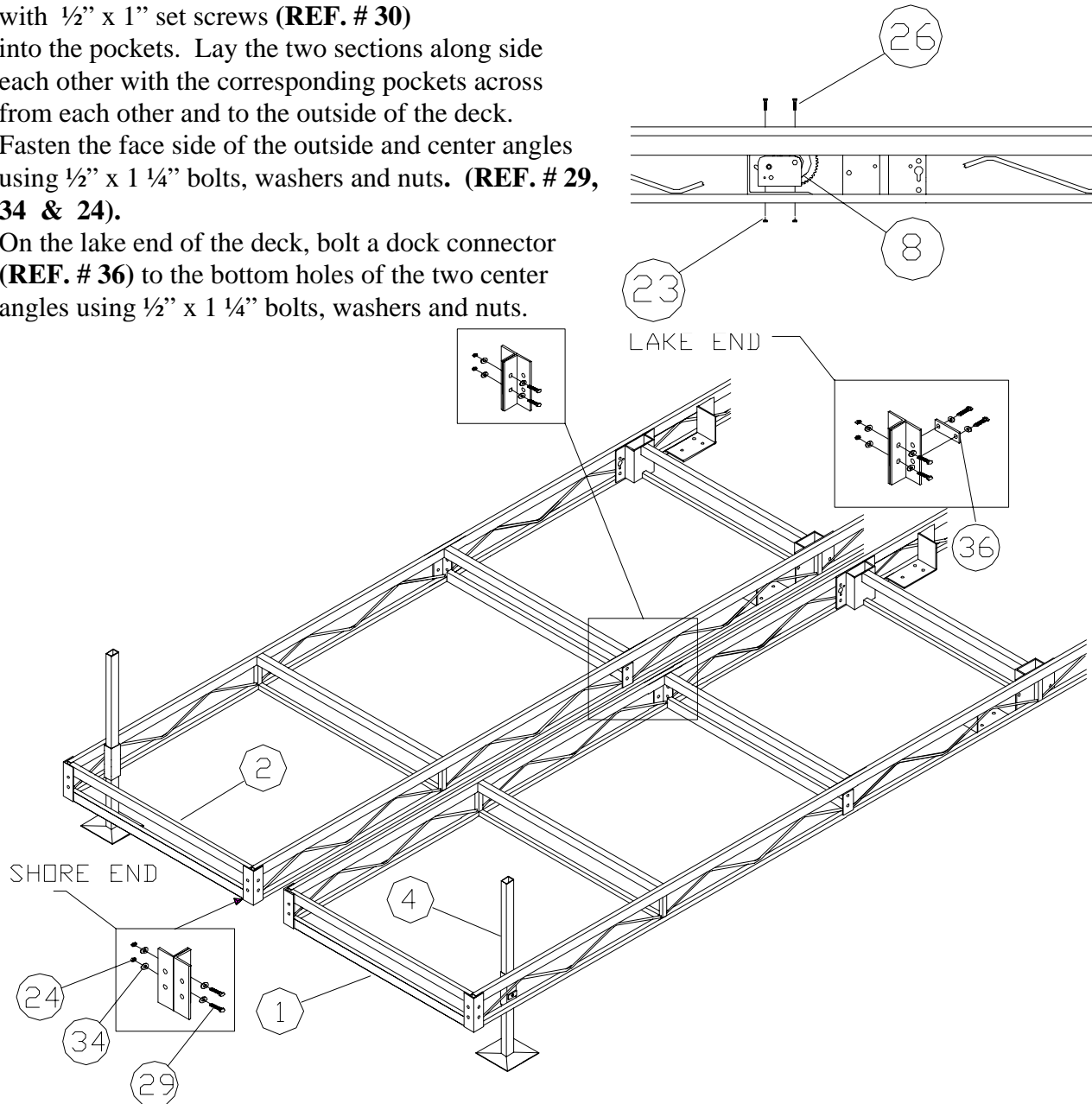
THANK YOU FOR PURCHASING OUR PRODUCT.

***Please read these instructions and follow them step by step.**

STEP 1. Take the two left and right 4' x 16' sections (**REF. # 1 & 2**) and stand them up on their sides with the pockets up. Slide the 6' support posts into the smaller pockets toward the end of the section. Secure with 1/2" x 1" set screws (**REF. # 30**)

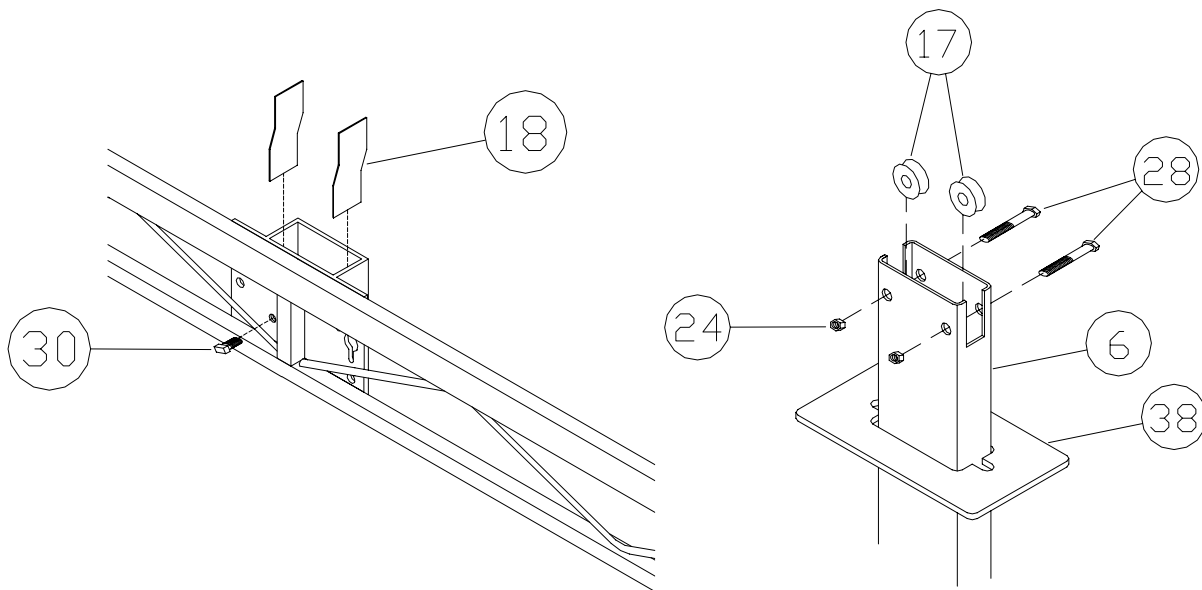
into the pockets. Lay the two sections along side each other with the corresponding pockets across from each other and to the outside of the deck. Fasten the face side of the outside and center angles using 1/2" x 1 1/4" bolts, washers and nuts. (**REF. # 29, 34 & 24**).

On the lake end of the deck, bolt a dock connector (**REF. # 36**) to the bottom holes of the two center angles using 1/2" x 1 1/4" bolts, washers and nuts.

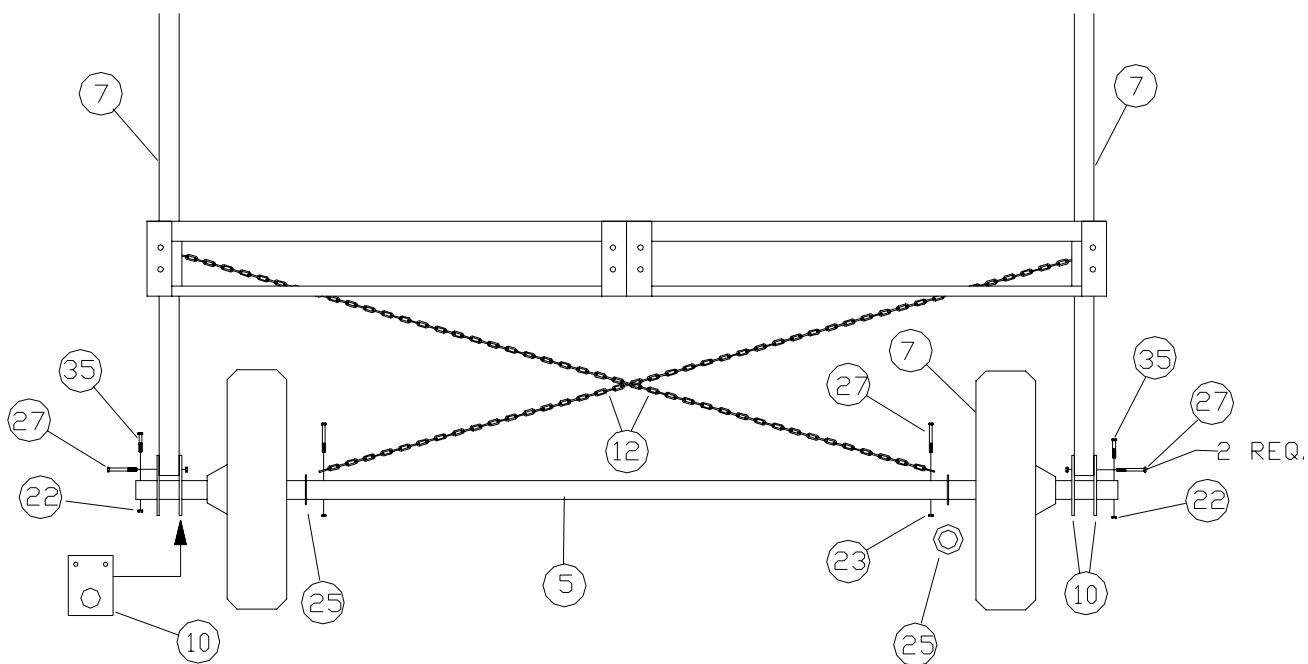


Raise the dock up approximately 30" and tighten set screws on the two posts. Support other end of dock in a safe and secure manner. Bolt winches (**REF. # 8**) to the winch plates (located to the side of the large center pockets) using 3/8 x 1" bolts & nuts.

STEP 2. Apply the four nylon wear strips (**REF. # 18**) to the inside narrow ends of the large vertical lift member pockets. Pockets should be clean and dry and above 50 degrees. Slide a VLM cover plate (**REF. # 38**) onto each vertical lift member. Attach dock pulleys (**REF. # 17**) with 1/2 x 2 1/2" bolts and nuts (**REF. # 35 & 22**) to top of vertical lift members (**REF. # 10**). Insert vertical lift members into pockets on each side of dock. Put set screw into the face of the pockets. Leave set screws loose at this time.

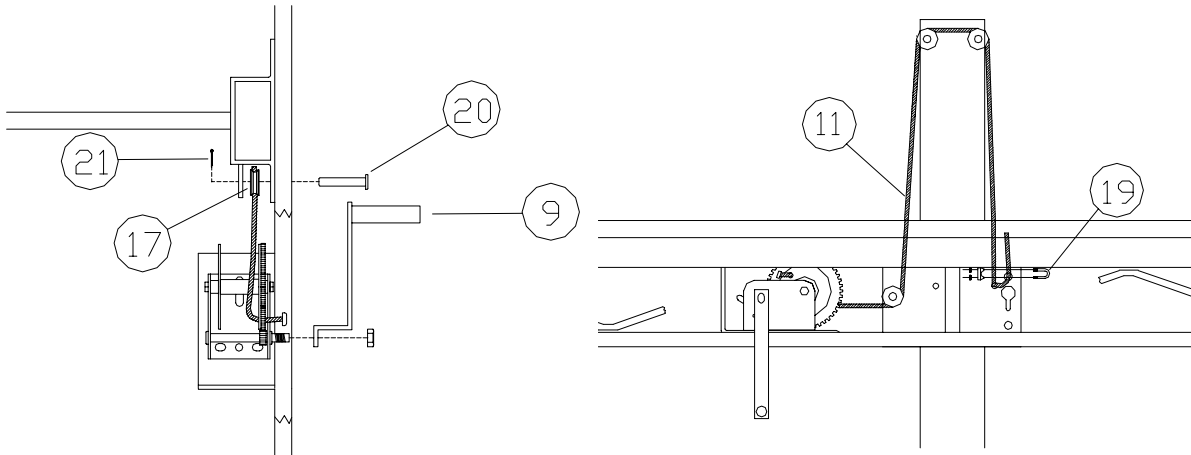


STEP 3. Attach the chains (**REF. # 12**) to the inside holes of the axle (**REF. # 5**) with a 3/8 x 3" bolt and nut. On the ends of the axle slide on the 3" washer (**REF. # 25**) then the dock wheels (**REF. # 7**) with the protruding hub to the outside onto the axle and slide up to the chains, and then slide on the two lift member brackets (**REF. # 10**). Place the 1/4 x 2 1/2" bolts (**REF. # 35 & 22**) into the holes in the ends of the axle and screw on the 1/4" acorn nuts. Roll axle under dock, keeping axle centered with dock. Bolt lift member bracket (**REF. # 10**) to vertical lift members (**REF. # 6**) with 3/8 x 3" bolts and nuts (**REF. # 27 & 23**)

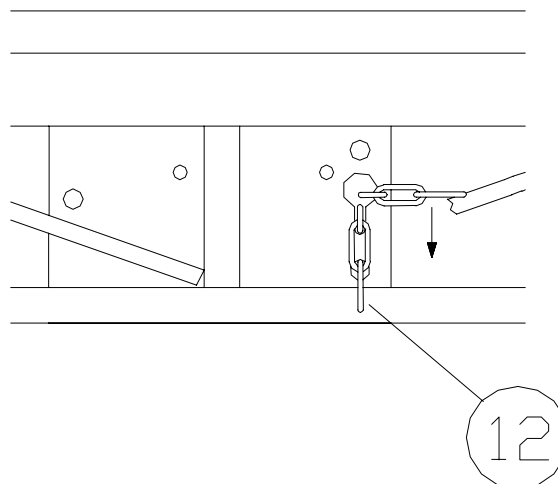


STEP 4. Bolt on winch handles (**REF. # 9**) with winch nut (**REF. # 37**). Attach lower dock pulleys (**REF. # 17**) to the winch side of the dock pockets with 1/2 x 2 3/4" clevis pin (**REF. # 20**) between pocket and ear tab. Secure with cotter pin. (**REF. # 21**) Starting winch cable (**REF. # 11**) from the outside of the winch, pass cable through the hole on the side of the drum with the gears. Run cable through lower pulley, then up to pulleys on vertical lift members, and down to holes on opposite side of pocket. Fasten with 3/16" cable clamp (**REF. # 19**). Work winches until cables are raising dock.

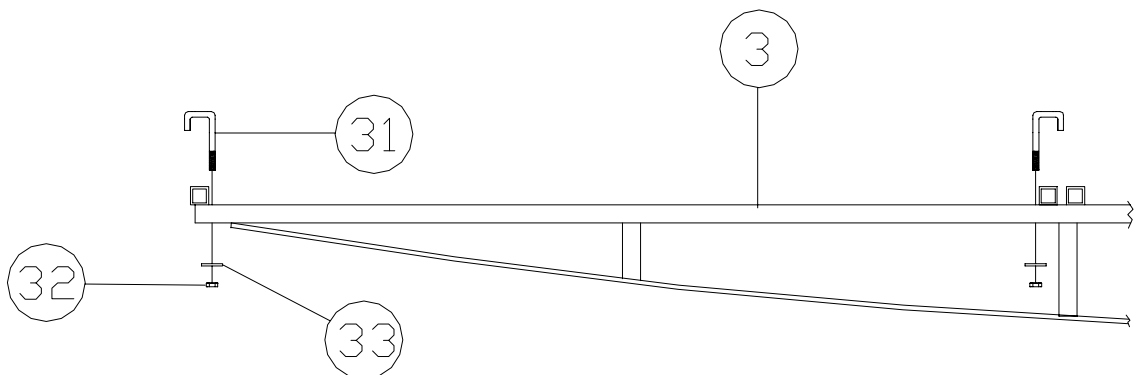
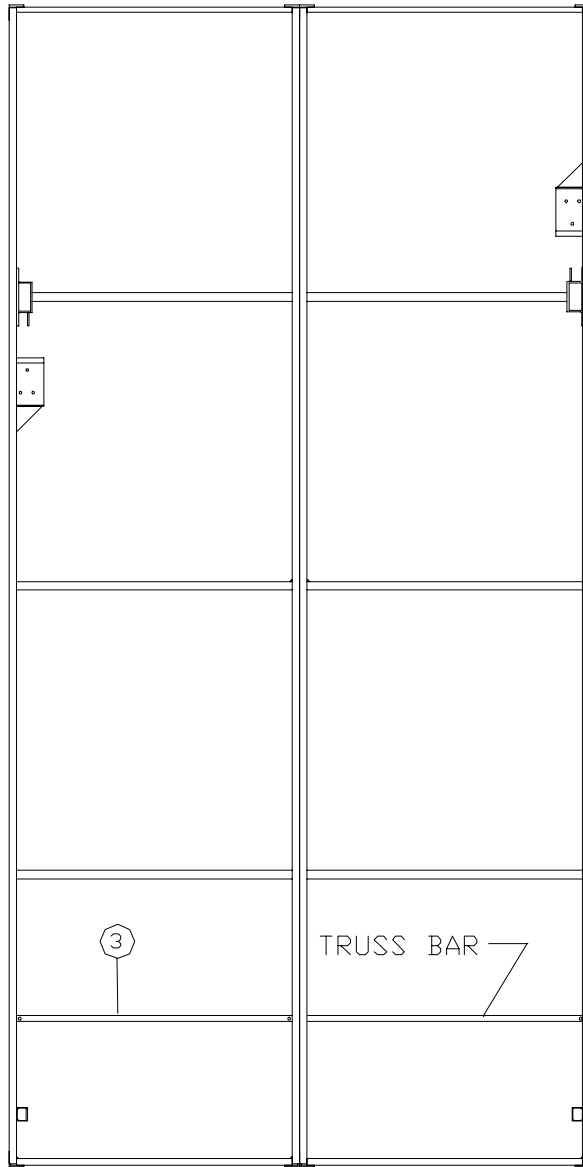
You must alternate winches as the dock moves up or down.



STEP 5. Bring top of chain (**REF. # 12**) up to the opposite side of dock, through the key hole bracket located on the vertical lift member pocket and lock in position by sliding the chain link down the key hole slot



STEP 6. Attach the truss bars (**REF. # 3**) by placing the truss bar underneath the docks frame so that it is about 24" from shore end of the dock.. Fasten truss bar to the bottom one inch square tube of the docks frame with the three J-hooks, 5/16" washers and locknuts (**REF. # 31, 33 & 32**).



NOTE: After the panels are installed on the dock, slide a cover plate (**Ref. # 39**) down each dock post and onto the deck. Place a rectangular cap (**Ref. #13**) onto each post.

STEP 7. Your dock is now ready to move into the water and be adjusted to the desirable height. Always loosen set screws and chains before changing dock height. You must alternate winches as the dock moves up or down. When moving dock into and from lake, lower dock to lowest level possible. Screw in set screw until snug against inside leg. Tighten 1 ½ to 2 turns more. Check set screw after a couple of uses and retighten if necessary. To achieve tension on the chains, (**which will help take out the sideway movement of your dock**) lower dock about 4” - 6” lower than where you want it to be. Pull chains as tight as possible and lock in position. Raise dock until chains are tight and tighten the set screws.

CEDAR PANELS

| <u>PART #</u> | <u>DESCRIPTION</u> | <u>QUANTITY</u> |
|---------------|---|-----------------|
| B34 | CEDAR PANEL 4' X 4' ADD ON RIGHT CUTOUT | 1 |
| B37 | CEDAR PANEL 4' X 4' ADD ON LEFT CUTOUT | 1 |
| B53 | CEDAR PANEL 4' X 4' STRAIGHT | 2 |
| B76 | CEDAR PANEL 4' X 4' L8 LEFT CUTOUT | 2 |
| B77 | CEDAR PANEL 4' X 4' L8 RIGHT CUTOUT | 2 |

ALUMINUM PANELS

| | | |
|---------|--|---|
| B12 (B) | ALUM PANEL 4' X 4' ADD ON LEFT CUTOUT | 1 |
| B14 (B) | ALUM PANEL 4' X 4' ADD ON RIGHT CUTOUT | 1 |
| B86 (B) | ALUM PANEL 4' X 4' STRAIGHT | 2 |
| B89 (B) | ALUM PANEL 4' X 4' L8 LEFT CUTOUT | 2 |
| B90 (B) | ALUM PANEL 4' X 4' L8 RIGHT CUTOUT | 2 |

AP10 APD DS L8 X 16' ALUMINUM PANEL SUNDECK
AW10 CPD DS L8 X 16' CEDAR PANEL SUNDECK

| REF. # | PART NO. | DESCRIPTION | APD | CPD |
|---------------|-----------------|---------------------------|------------|------------|
| 1 | M74 | DS RIGHT FRAME | 1 | 1 |
| 2 | M73 | DS LEFT FRAME | 1 | 1 |
| 3 | F62 | TRUSS BAR | 1 | 1 |
| 4 | C27 | 6' SUPPORT POSTS | 4 | 4 |
| 5 | 30081 | L8 AXLE | 1 | 1 |
| 6 | 30084 | AL VERTICAL LIFT MEMBER | 2 | 2 |
| 7 | 4002 | TIRES | 2 | 2 |
| 8 | 3005 | WINCH DL 1100 | 2 | 2 |
| 9 | 3008 | WINCH HANDLE | 2 | 2 |
| 10 | 30088 | VERTICAL LIFT MEMBER BRKT | 4 | 4 |
| 11 | 3050 | CABLE 3/16" X 15' | 2 | 2 |
| 12 | 3072 | CHAIN 3/16" X 9' | 2 | 2 |
| 13 | 3803 | CAP POST | 2 | 2 |
| 14 | 3804 | CAP VERTICAL LIFT MEMBER | 2 | 2 |
| 15 | 4108 | FOAM TAPE | 7 | - |
| 16 | 4521 | PLASTIC EDGING | 4 | - |
| 17 | 3300 | PULLEY SHEAVE 1 1/2" | 6 | 6 |
| 18 | 4112 | 8 1/2" WEAR PAD | 4 | 4 |
| 19 | 5003 | CABLE CLAMP 3/16" | 2 | 2 |
| 20 | 5008 | CLEVIS PIN 1/2 X 2 3/4" | 2 | 2 |
| 21 | 5025 | COTTER PIN | 2 | 2 |
| 22 | 5041 | NUT 1/4" ACORN | 2 | 2 |
| 23 | 5056 | NUT 3/8" | 12 | 12 |
| 24 | 5058 | NUT 1/2" | 16 | 16 |
| 25 | 5077 | WASHER 3" | 2 | 2 |
| 26 | 5081 | BOLT 3/8 X 1" | 6 | 6 |
| 27 | 5084 | BOLT 3/8 X 3" | 6 | 6 |
| 28 | 5120 | BOLT 1/2 X 2 1/2" | 4 | 4 |
| 29 | 5126 | BOLT 1/2 X 1" | 12 | 12 |
| 30 | 5170 | SET SCREW 1/2 X 3/4" | 4 | 4 |
| 31 | 5031 | J BOLT | 3 | 3 |
| 32 | 5040 | NUT 5/16" | 3 | 3 |
| 33 | 5068 | WASHER 5/16" | 3 | 3 |
| 34 | 5069 | WASHER 7/16" | 24 | 24 |
| 35 | 5153 | BOLT 1/4" X 2 1/2" GR 2 | 2 | 2 |
| 36 | 10200 | DOCK CONNECTORS | 2 | 2 |
| 37 | 5066 | WINCH NUT | 2 | 2 |
| 38 | 3850 | VLM COVER PLATE APD WHITE | 2 | - |
| | 3851 | VLM COVER PLATE APD BEIGE | 2 | - |
| | 3852 | VLM COVER PLATE CPD BROWN | - | 2 |
| 39 | 3840 | COVER PLATE APD WHITE | 2 | - |
| | 3845 | COVER PLATE APD BEIGE | 2 | - |
| | 3841 | COVER PLATE CPD BROWN | - | 2 |