

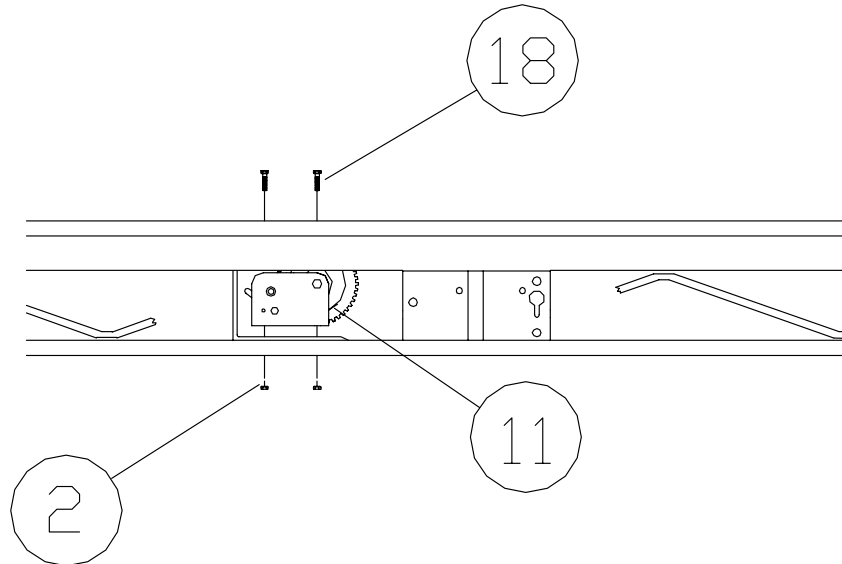
A59 APD & A86 CPD 5'X 16' SW ALUMINUM PORTA-DOCK

For Beige Decking Add the Letter B to model

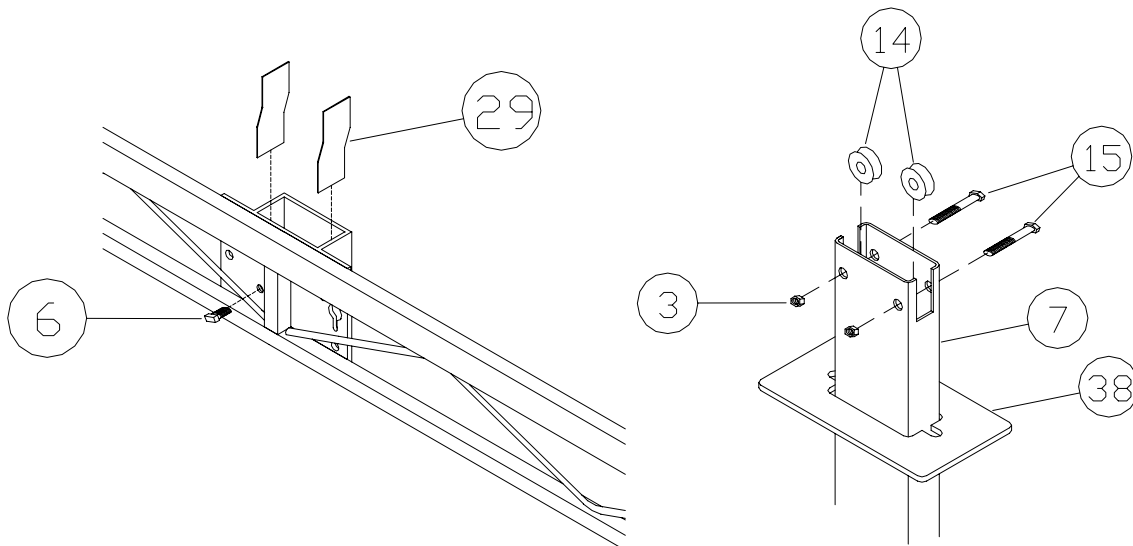
Thank you for purchasing our product!

***Please read these instructions and follow them step by step. ***

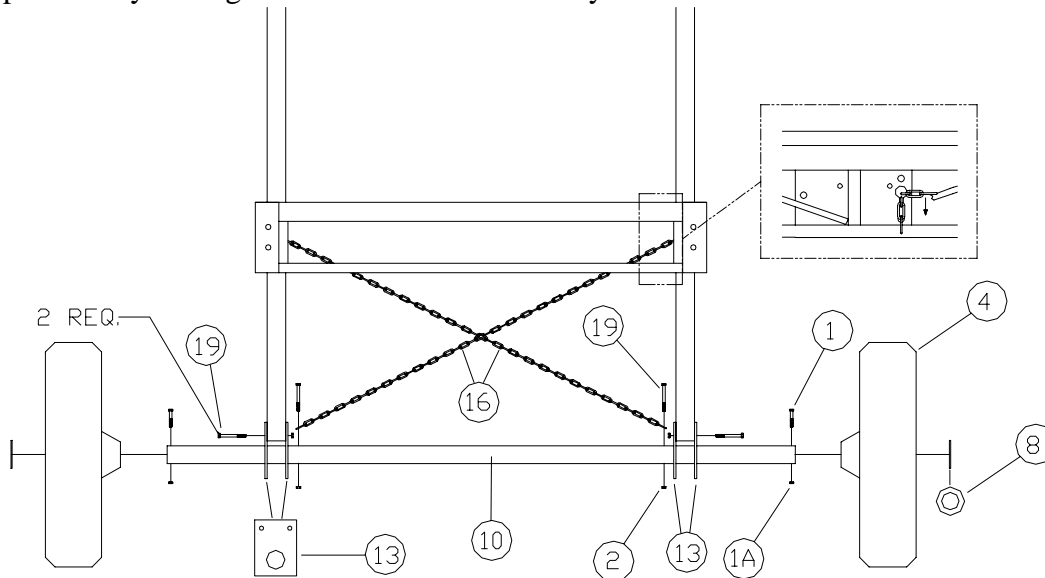
Step 1. Block up both ends of dock about 16". Bolt on winches (**REF # 11**) to the winch plate with the winch handle shaft to the outside using 3/8" x 1" bolts and nuts (**REF # 18 & 2**).



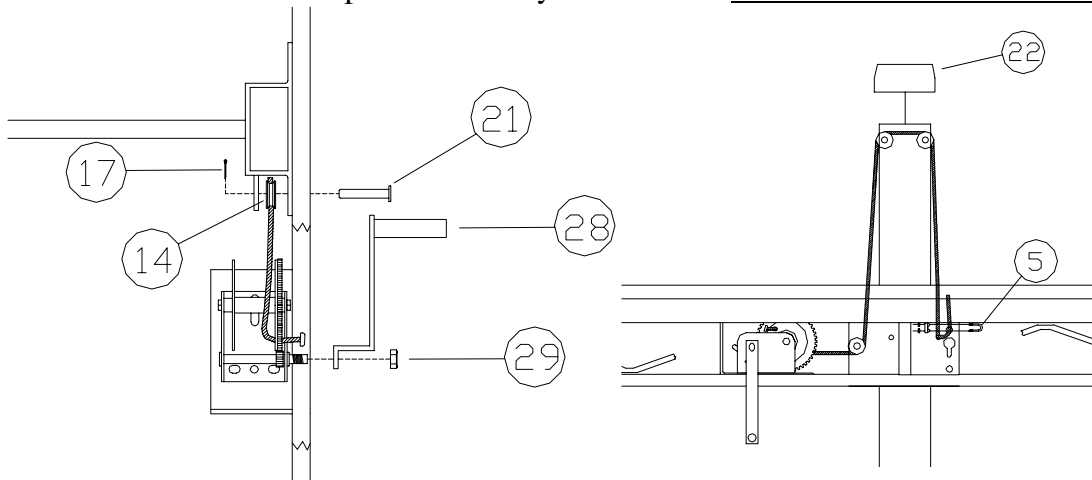
Step 2. Apply the four nylon wear strips (**REF # 29**) to the inside narrow ends of the vertical lift member pockets. Pockets should be clean and dry and above 50 degrees. Slide a VLM cover plate (**REF # 38**) onto each vertical lift member. Attach dock pulleys (**REF # 14**) with 1/2" x 2 1/2" bolts and nuts (**REF # 15 and 3**) to top of vertical lift members (**REF # 7**). Insert vertical lift members into pockets on each side of dock. Screw in set screw (**REF # 6**) into the face of the pockets. Leave all set screws loose at this time.



Step 3. Attach the chains (**REF # 16**) to the two farthest inside holes of the axle (**REF # 10**) with 3/8" x 3" bolt and nut (**REF # 19 & 2**). Next, slide on the vertical lift member brackets (**REF # 13**) onto axle, then spacing collars (**REF # 8**), then wheels (**REF # 4**) with the hub to the inside. Place the 1/4" X 2 1/2" bolt (**REF # 1**) in the holes in the ends of the axle, screw on 1/4" acorn nut (**REF # 1A**). Roll axle under dock, keeping axle centered with dock. Bolt vertical lift member brackets (**REF # 13**) to vertical lift members (**REF # 7**) with 3/8" x 3" bolts and nuts (**REF # 19 & 2**) so there is a bracket on each side of the lifting member. Bring end of chain up to the opposite side of dock through the keyhole located on the right side of pocket and lock in position by sliding the chain link down the keyhole slot.



Step 4. Attach winch handles (**REF # 28**) with winch nut (**REF # 29**). Attach lower dock pulleys (**REF # 14**) between pocket and ear tab located on the winch side of the vertical lift member pocket with 1/2" x 2 3/4" clevis and cotter pins (**REF # 21 & 17**). Starting winch cable (**REF # 12**) from the outside of the winch, pass cable through the hole on the side of the drum with the gears. Run cable through lower pulley (**REF # 14**), then up to pulleys (**REF # 14**) on vertical lift members, and down to hole on side of the vertical lift member bracket. Fasten with cable clamp (**REF # 5**). Work winches until cables are raising dock. You must alternate winches as the dock moves up or down and you must have slack in the chain when raising.



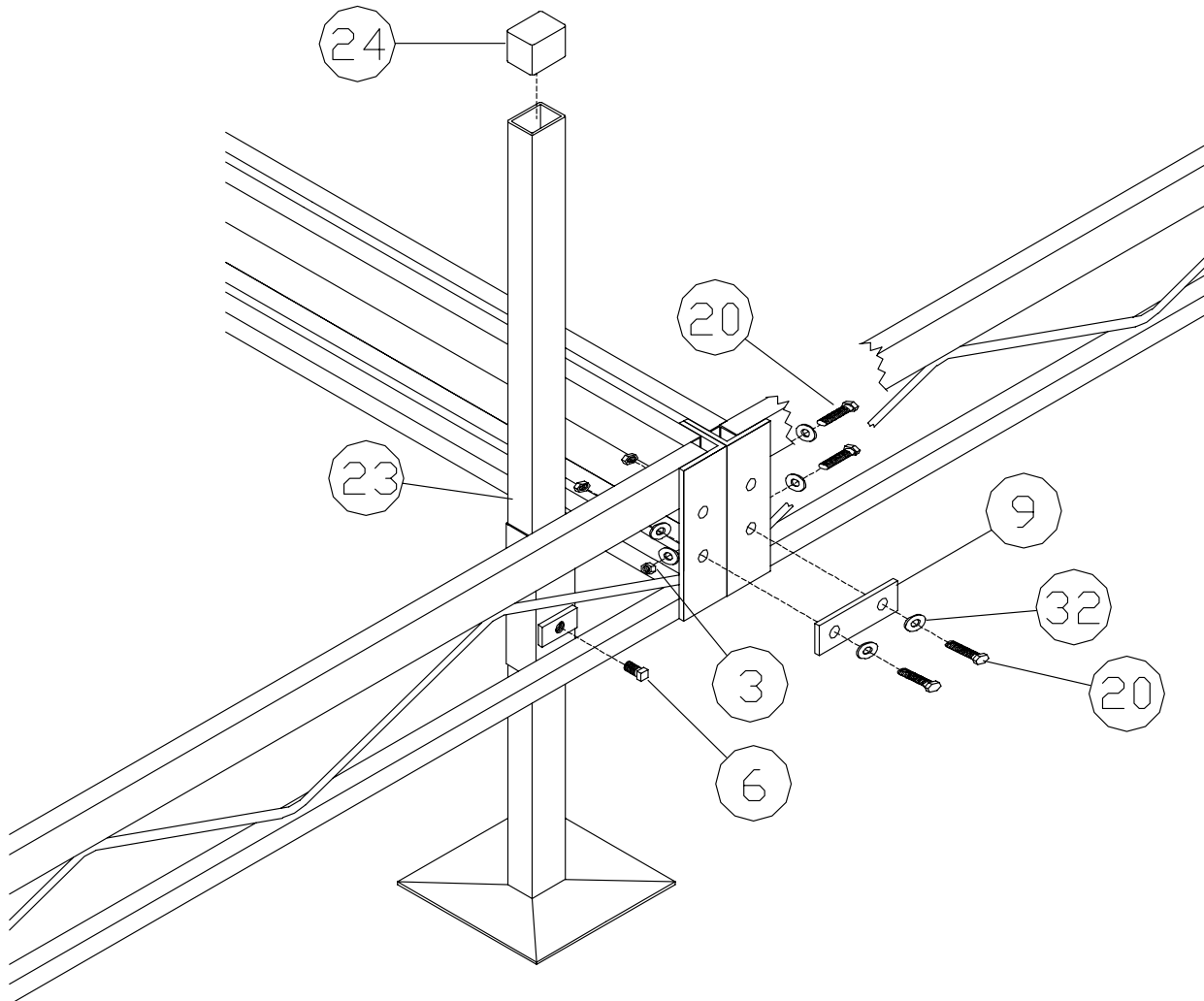
Step 5. Stand add on section on side and insert dock posts (**REF # 23**) with base on bottom side. Place dock post caps (**REF # 24**) on top of post. Put set screws (**REF # 6**) into side of dock pocket bracket. Leave loose-do not tighten. Connect add on section to wheel end section with 1/2" x 1 1/4" bolts, 7/16" washers, and 1/2" nuts (**REF # 20, 33, & 3**). Bolt dock connector brackets (**REF # 9**) to the lower side holes of the angle with 1/2" x 1 1/4" bolts, washers, and nuts (**REF # 20, 33, & 3**). Tighten set screws on dock post. Attach vertical lift member pulley cover (**REF # 23**) over the top of the vertical lift members.

Note: On APD Models, run foam tape on both sides of dock frame.

Your dock is now ready to move into the water and be adjusted to the desirable height.

Always loosen setscrews and chains before changing dock height. **You must** alternate winches as the dock moves up or down. When moving dock into and from lake, lower dock to lowest level possible.

Screw in set screw until snug against inside leg. Tighten 1 1/2 to 2 turns more. Check set screw after a couple of uses and retighten if necessary.



PARTS LIST**A59 APD & A86 CPD 5'X16' SW ALUMINUM PORTA-DOCK**

REF. #	PART #	DESCRIPTION	CPD	APD
1	5123	1/4" X 2 1/2" BOLT	2	2
1A	5041	1/4" ACORN NUT	2	2
2	5056	3/8" NUT	8	8
3	5058	1/2" NUT	4	4
4	4002	TIRE PLASTIC MOLDED	2	2
5	5003	3/16" CABLE CLAMP	2	2
6	5170	1/2" X 3/4" SET SCREW	2	2
7	30084	VERTICAL LIFT MEMBER	2	2
8	5077	WASHER 3"	2	2
9	10200	DOCK CONNECTOR BRACKET	2	2
10	30180	AXLE	1	1
11	3005	WINCH DL 1100	2	2
12	3050	CABLE 3/16" X 15'	2	2
13	30088	LIFT MEMBER BRACKET	4	4
14	3300	PULLEY SHEAVE 1 1/2"	6	6
15	5120	1/2" X 2 1/2" BOLT	4	4
16	3090	CHAIN 3/16" X 8'	2	2
17	5025	1/8" X 1" COTTER PIN	2	2
18	5081	3/8" X 1" BOLT	6	6
19	5084	3/8" X 3" BOLT	6	6
21	5008	1/2" X 2 3/4" PIN	2	2
22	3804	VLM PULLEY COVER	2	2
25	F94	FRAME 5' X 16' APD/CPD WH END	1	1
	B95 (B)	AL PANEL 5' SW CUTOUT	-	2
	B13 (B)	AL PANEL 5' STRAIGHT	-	2
	B53	CEDAR PANEL STRAIGHT	2	-
	B50	CEDAR PANEL DOUBLE CUT	2	-
27	3008	DL WINCH HANDLE	2	2
28	5066	DL WINCH NUT	2	2
29	4112	8 1/2" VLM WEAR PAD	4	4
30	4108	APD FOAM TAPE-16' ROLL	-	3
31	F94	FRAME AL 5 X 16' WHEEL END	1	1
38	3850	VLM COVER PLATE APD WHITE	-	2
	3851	VLM COVER PLATE APD BEIGE	-	2
	3852	VLM COVER PLATE CPD BROWN	2	-