

PORTA-DOCK, INC.

AD05- DS 4'X 16'L8-AA / AP05- DS 4'X 16'L8-APD
AW05- DS 4'X 16'L8-CPD ALUMINUM PORTA-DOCK

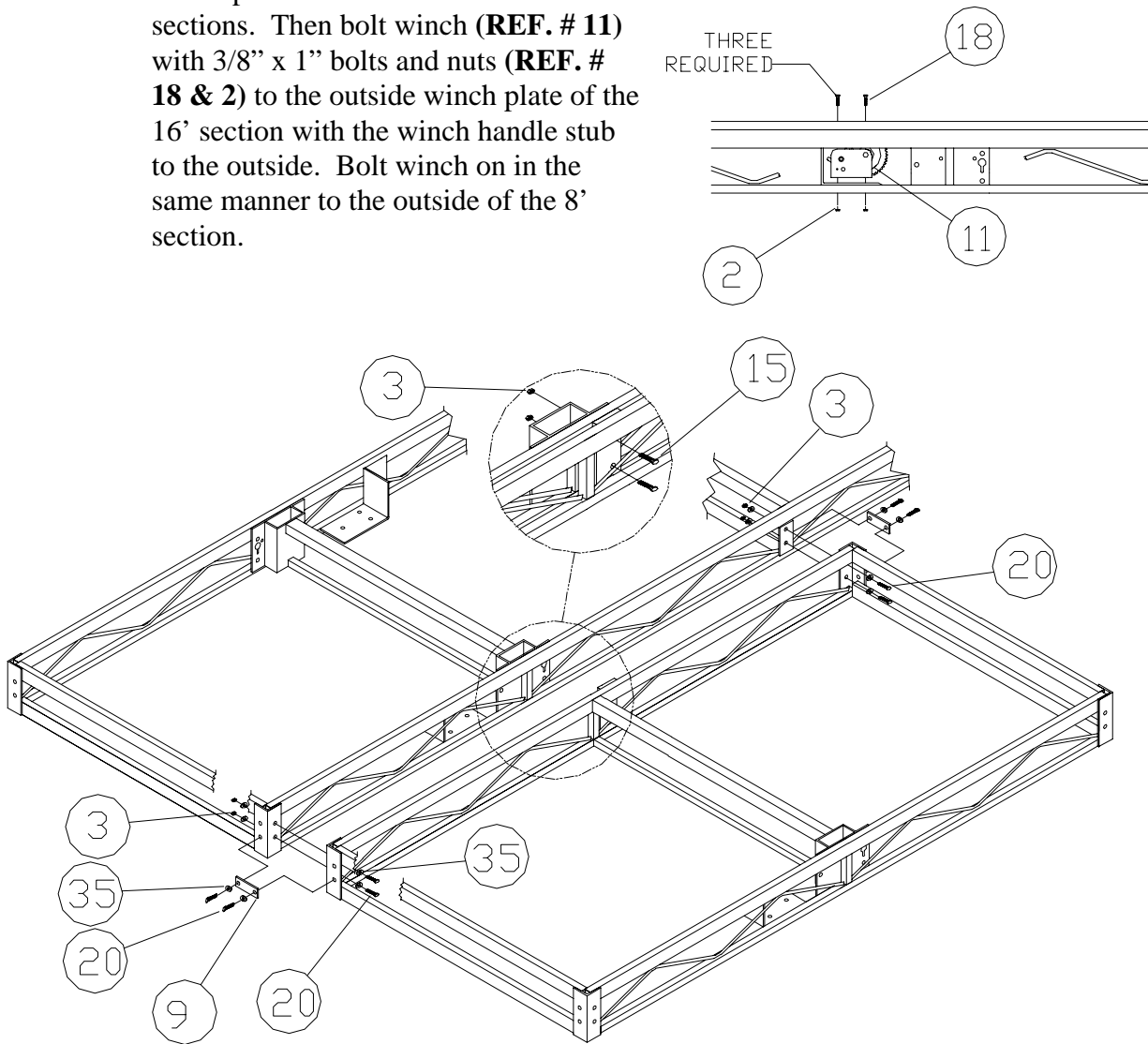
For Beige Decking Add the Letter B to the Model

Thank you for purchasing our product!

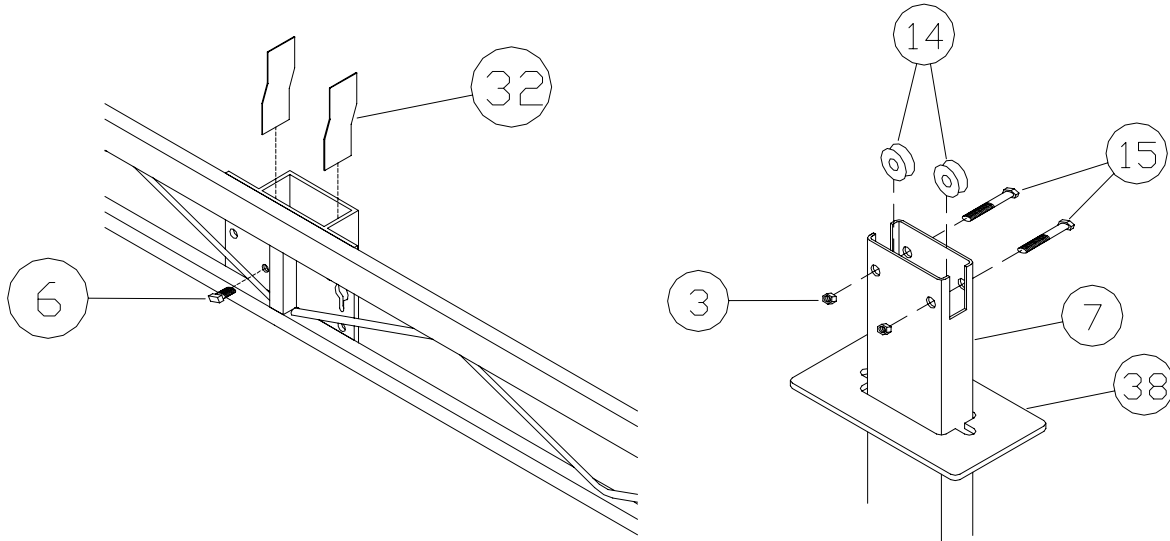
***Please read these instructions and follow them step by step.**

Step 1. Decide if you want your L dock to the right or left. Lay the 8' section (**REF. # 30**) to that side of the 16' wheel end section. (**REF. # 26**) Bolt 8' L section to the side of the 16' wheel end section using 1/2" x 1 1/4" bolts, washers and nuts. (**REF. # 20, 35 & 3**) Bolt dock connector brackets (**REF. # 9**) to the lower side holes of the angle with 1/2" x 1 1/4" bolts and nuts. Bolt the center of the 8' section to the inside pocket of the 16' section using 1/2 x 2 1/2" bolts and nuts. (**REF. # 15 & 3**)

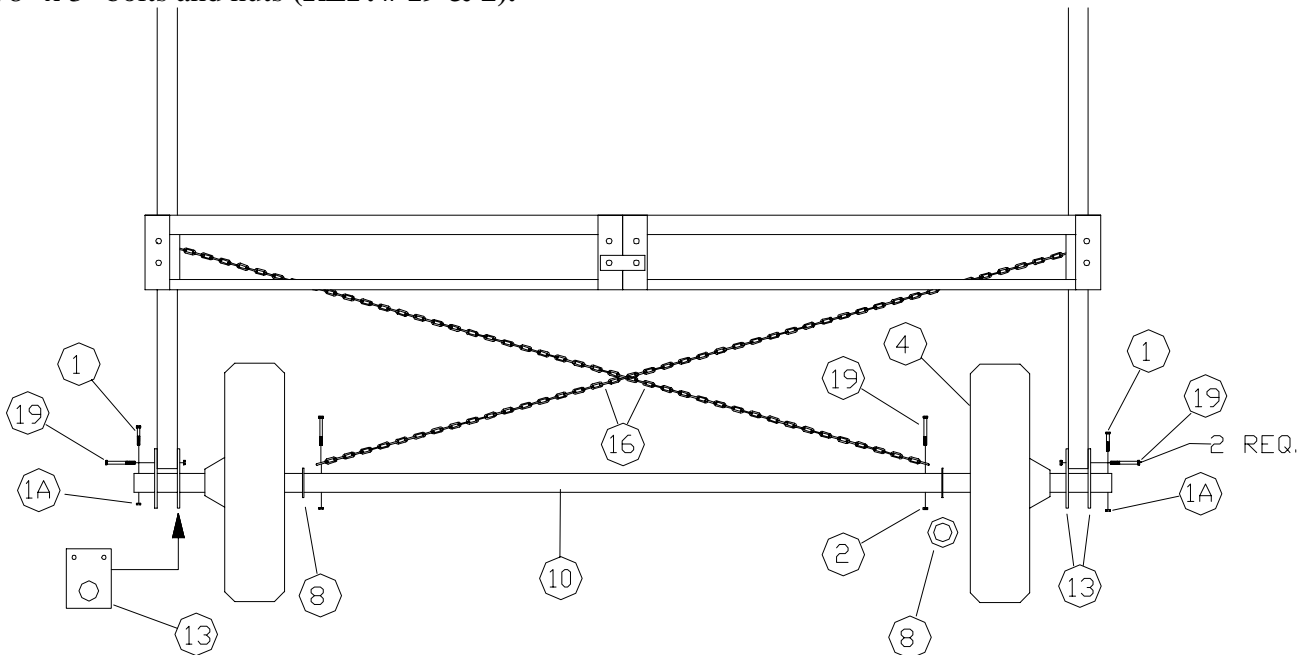
NOTE: If assembling an AA dock, the center section will have to be bolted together when the dock is raised off the ground. After **Step 5**. Block the dock up about 2' behind winch plates on both the 8' and 16' sections. Then bolt winch (**REF. # 11**) with 3/8" x 1" bolts and nuts (**REF. # 18 & 2**) to the outside winch plate of the 16' section with the winch handle stub to the outside. Bolt winch on in the same manner to the outside of the 8' section.



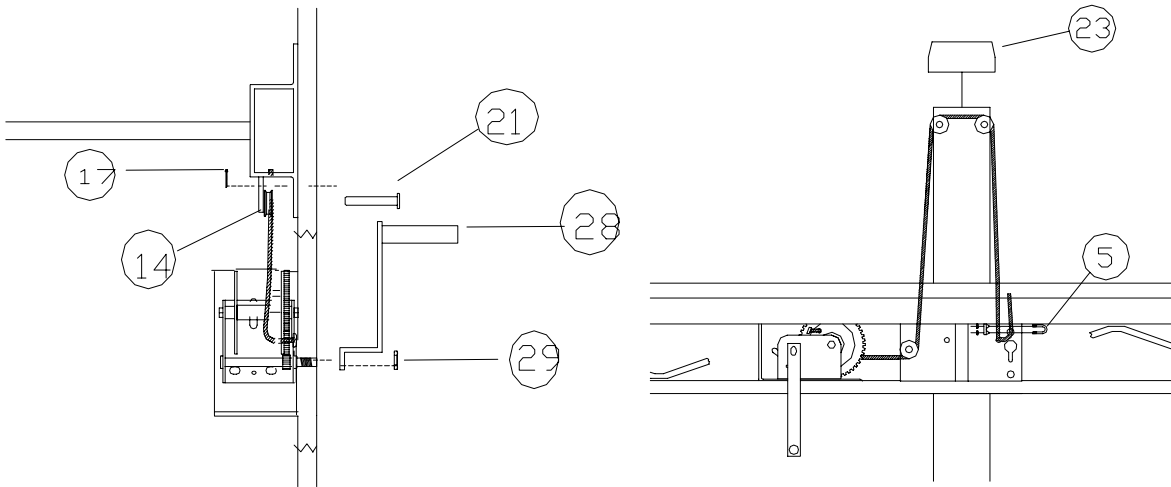
Step 2. Apply the four nylon wear strips (**REF. # 32**) to the inside narrow ends of the pockets. Pockets should be clean and dry and above 50 degrees. Slide a VLM cover plate (**REF. # 38**) onto each vertical lift member. Attach dock pulleys (**REF. # 14**) with 1/2" x 2 1/2" bolts and nuts (**REF. # 15 & 3**) to top of vertical lift members (**REF. # 7**). Insert vertical lift members into pockets on each side of dock. Screw the set screw (**REF. # 6**) into the face of the pockets. Leave all sets crews loose at this time.



Step 3. Attach chains (**REF. # 16**) to inside holes of axle (**REF. # 10**) with 3/8" x 3" bolts and nuts (**REF. # 19 & 2**). Slide on the 3" washers (**REF. # 8**) then the dock wheels (**REF. # 4**) with the hub protruding toward the outside onto the axle, up to the washer and chains. Slide on the lift member brackets (**REF. # 13**) and place the 1/4" X 2 1/2" bolts (**REF. # 1**) in the holes in the ends of the axle and screw on the 1/4" acorn nuts (**REF. # 1A**). Roll axle under dock, keeping axle centered with dock. Bolt lift member bracket (**REF. # 13**) to vertical lift members (**REF. # 7**) with 3/8" x 3" bolts and nuts (**REF. # 19 & 2**).



Step 4. Bolt on winch handles (**REF. # 28**) with winch nut (**REF. #29**). Attach lower dock pulleys (**REF. # 14**) to the winch side of the dock pockets with 1/2" x 2 3/4" pin between pocket and ear tab. Starting winch cable (**REF. # 12**) from the outside of the winch, pass cable through the hole on the side of the drum with the gears. Run cable through lower pulley, then up to pulleys on vertical lift members, and down to hole in side bracket. Fasten with 3/16" cable clamp (**REF. # 5**). Work winches until cables are raising dock. You must alternate winches as the dock moves up or down. Place VLM pulley cover (**REF. #23**) onto vertical lift member.

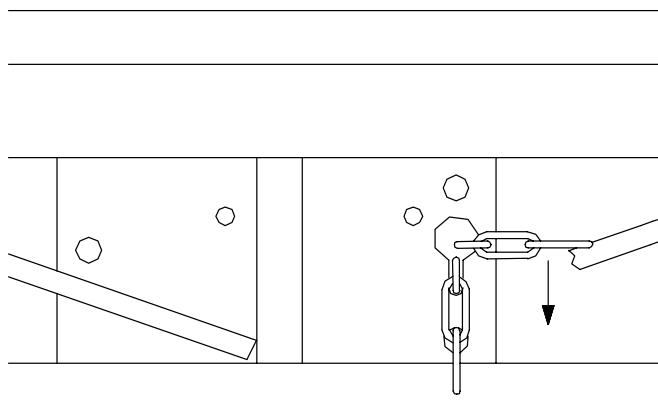


Step 5. Raise dock high enough to be able to work on it.

Caution: Before working under dock, be sure that the winches are locked and the set screws are tight.

Bring top of chain (**REF. # 16**) up to the opposite side of dock, through the keyhole bracket. Which is located on the vertical lift member pocket. Lock in position by sliding the chain link down the keyhole slot. If assembling an AA dock, bolt the center of the 8' section to the inside pocket of the 16' section, using 1/2" x 2 1/2" bolts and nuts (**REF. # 15 &3**)

NOTE: If further adjustment of the dock height is necessary, loosen chains and set screws before adjusting.



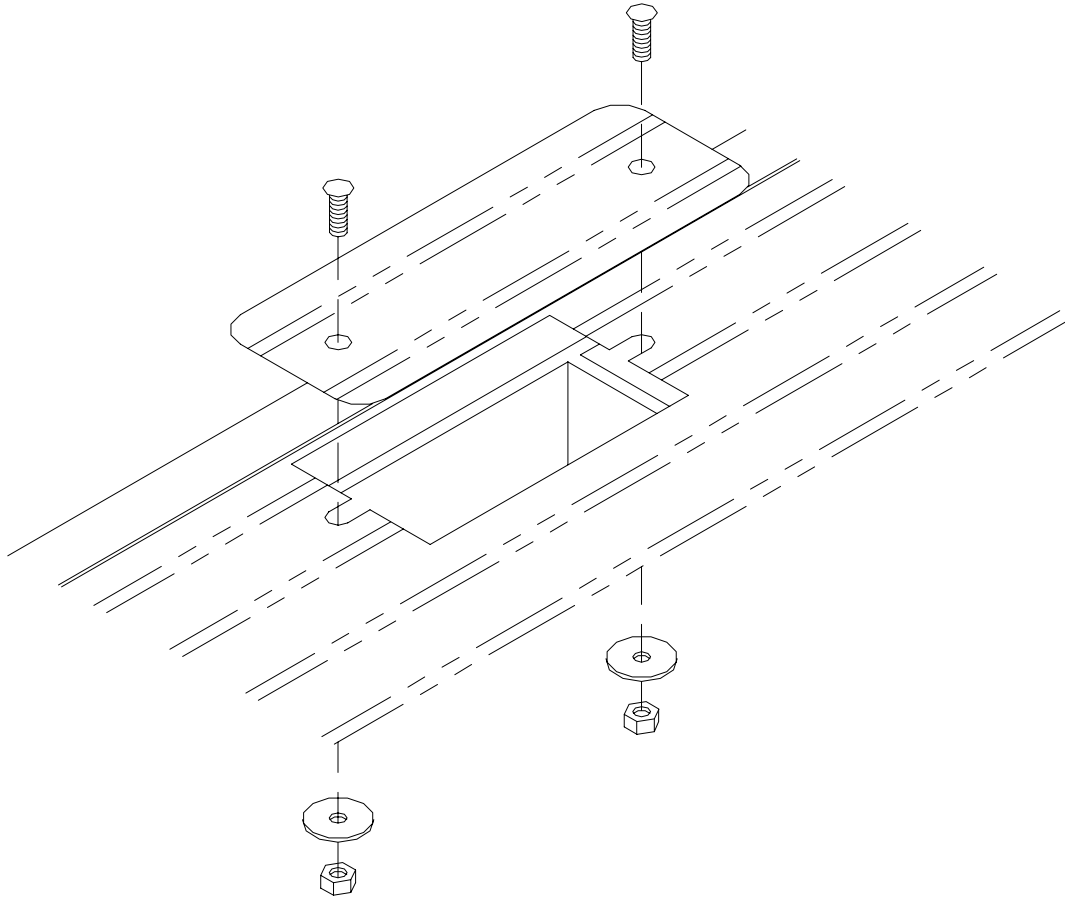
Your dock is now ready to move into the water and be adjusted to the desirable height. When the dock is at desired height, chains should be tight. If the chains are not tight, lower dock 3 to 4 inches and tighten chains. Raise the dock back to the desired height and recheck tightness of chains. Always loosen setscrews and chains before changing dock height. You must alternate winches as the dock moves up or down. When moving dock into and from lake, lower dock to lowest level possible. Screw in setscrew until snug against inside leg. Tighten 1 1/2 to 2 turns more. Check set screw after a couple of uses and retighten if necessary.

AD05- DS 4'X 16'L8-AA / AP05- DS 4'X 16'L8-APD
AW05- DS 4'X 16'L8-CPD ALUMINUM PORTA DOCK

| REF. # | PART NO. | DESCRIPTION | APD | CPD | AA |
|---------------|-----------------|---------------------------|------------|------------|-----------|
| 1 | 5153 | 1/4" x 2 1/2" BOLT | 2 | 2 | 2 |
| 1A | 5041 | 1/4" ACORN NUT | 2 | 2 | 2 |
| 2 | 5056 | 3/8" NUT | 12 | 12 | 12 |
| 3 | 5058 | 1/2" NUT | 14 | 14 | 14 |
| 4 | 4002 | TIRE PLASTIC MOLDED | 2 | 2 | 2 |
| 5 | 5003 | 3/16" CABLE CLAMP | 2 | 2 | 2 |
| 6 | 5170 | 1/2" X 3/4" SET SCREW | 2 | 2 | 2 |
| 7 | 30084 | VERTICAL LIFT MEMBER | 2 | 2 | 2 |
| 8 | 5077 | WASHER 3" | 2 | 2 | 2 |
| 9 | 10200 | DOCK CONNECTOR BRACKET | 2 | 2 | 2 |
| 10 | 30081 | AXLE | 1 | 1 | 1 |
| 11 | 3005 | WINCH DL1100 | 2 | 2 | 2 |
| 12 | 3050 | CABLE 3/16" X 15' | 2 | 2 | 2 |
| 13 | 30088 | LIFT MEMBER BRACKET | 4 | 4 | 4 |
| 14 | 3300 | PULLEY SHEAVE 1 1/2" | 6 | 6 | 6 |
| 15 | 5120 | 1/2" X 2 1/2" BOLT | 6 | 6 | 6 |
| 16 | 3072 | CHAIN 3/16" X 9' | 2 | 2 | 2 |
| 17 | 5025 | 1/8" X 1" COTTER PIN | 2 | 2 | 2 |
| 18 | 5081 | 3/8" X 1" BOLT | 6 | 6 | 6 |
| 19 | 5084 | 3/8" X 3" BOLT | 6 | 6 | 6 |
| 20 | 5126 | 1/2" X 1 1/4" BOLT | 8 | 8 | 8 |
| 21 | 5008 | 1/2" X 2 3/4" PIN | 2 | 2 | 2 |
| 23 | 3804 | VLM PULLEY COVER | 2 | 2 | 2 |
| 28 | 3008 | DL WINCH HANDLE | 2 | 2 | 2 |
| 29 | 5066 | DL WINCH NUT | 2 | 2 | 2 |
| 32 | 4112 | 8 1/2" AL VLM WEAR PAD | 4 | 4 | 4 |
| 33 | 4108 | ROLL FOAM TAPE 16' | 5 | - | - |
| 35 | 5069 | 7/16" WASHER | 16 | 16 | 16 |
| | C120 | AA COVER PLATE | - | - | 1 |
| 38 | 3850 | VLM COVER PLATE APD WHITE | 2 | - | - |
| | 3851 | VLM COVER PLATE APD BEIGE | 2 | - | - |
| | 3852 | VLM COVER PLATE CPD BROWN | - | 2 | - |

C120 AA COVER PLATE PKG

| REF.NO | PART # | DESCRIPTION | APD | CPD | AA |
|---------------|---------------|-----------------------------------|------------|------------|-----------|
| | 5067 | FENDER WASHER 3/8" | | | 2 |
| | 5150 | CARRIAGE BOLT 1/4" X 3/4" GR2 | - | - | 2 |
| | 5055 | NUT FIN 1/4" | - | - | 2 |
| | 10120 | AA COVER PLATE 2.75" X 8" NEW '03 | - | - | 2 |



FRAMES

| PART# | DESCRIPTION | APD | CPD | AA |
|--------------|---------------------------------|------------|------------|-----------|
| M60 | FRAME 4'X 16' APD/CPD WHEEL END | 1 | 1 | - |
| M20 | FRAME 4'X 16' AA WHEEL END | - | - | 1 |
| M25 | FRAME 4'X 8' APD/CPD L8-L | 1 | 1 | - |
| M68 | FRAME 4'X 8' AA L8-L | - | - | 1 |

PANELS

| PART# | DESCRIPTION | APD | CPD | AA |
|--------------|----------------------------------|------------|------------|-----------|
| B86 (B) | 4'X 4' ALUM. PANEL STRAIGHT | 2 | - | - |
| B53 | 4'X 4' CEDAR PANEL STRAIGHT | - | 2 | - |
| B90 (B) | 4'X 4' ALUM. PANEL RIGHT CUTOUT | 2 | - | - |
| B77 | 4'X 4' CEDAR PANEL RIGHT CUT OUT | - | 2 | - |
| B89 (B) | 4'X 4' ALUM. PANEL LEFT CUT OUT | 2 | - | - |
| B76 | 4'X 4' CEDAR PANEL LEFT CUT OUT | - | 2 | - |